



THE JOURNAL OF
CLINICAL PSYCHIATRY

THE OFFICIAL JOURNAL OF THE AMERICAN SOCIETY OF CLINICAL PSYCHOPHARMACOLOGY

Supplementary Material

Article Title: Efficacy and Safety of a Combination of Olanzapine and Samidorphan in Adult Patients With an Acute Exacerbation of Schizophrenia: Outcomes From the Randomized, Phase 3 ENLIGHTEN-1 Study

Author(s): Steven G. Potkin, MD; Jelena Kunovac, MD; Bernard L. Silverman, MD; Adam Simmons, MPH; Ying Jiang, PhD; Lauren DiPetrillo, PhD; and David McDonnell, MD

DOI Number: <https://doi.org/10.4088/JCP.19m12769>

List of Supplementary Material for the article

1. [Table 1](#) Summary of prior antipsychotic medications ($\geq 5\%$ of patients overall; Safety Population)
2. [Table 2](#) Summary of extrapyramidal symptom scores from baseline to last on-treatment assessment
3. [Figure 1](#) Change from Baseline in PANSS Subscales by Week (MMRM; Efficacy population)
4. [Figure 2](#) PANSS ($\geq 30\%$ improvement from baseline) (A) and CGI-I (score of ≤ 2) (B) Responders by Week (LOCF; efficacy population)
5. [Figure 3](#) Change from Baseline in PANSS Total Score at Week 4 in the Overall Efficacy Population and Key Subgroups for A) OLZ/SAM and olanzapine vs placebo and B) OLZ/SAM vs olanzapine (MMRM approach)

Disclaimer

This Supplementary Material has been provided by the author(s) as an enhancement to the published article. It has been approved by peer review; however, it has undergone neither editing nor formatting by in-house editorial staff. The material is presented in the manner supplied by the author.

© Copyright 2020 Physicians Postgraduate Press, Inc.

It is illegal to post this copyrighted PDF on any website. ♦ © 2020 Copyright Physicians Postgraduate Press, Inc.

SUPPLEMENTARY MATERIAL

Supplementary Table 1. Summary of prior antipsychotic medications ($\geq 5\%$ of patients overall; Safety Population)

	OLZ/SAM n = 134	Olanzapine n = 133	Placebo n = 134	All N = 401
Patients who took at least 1 prior antipsychotic medication, n (%)	121 (90.3)	119 (89.5)	117 (87.3)	357 (89.0)
Risperidone	45 (33.6)	45 (33.8)	34 (25.4)	124 (30.9)
Haloperidol	37 (27.6)	40 (30.1)	45 (33.6)	122 (30.4)
Quetiapine	18 (13.4)	18 (13.5)	24 (17.9)	60 (15.0)
Aripiprazole	13 (9.7)	13 (9.8)	11 (8.2)	37 (9.2)
Amisulpride	6 (4.5)	2 (1.5)	14 (10.4)	22 (5.5)

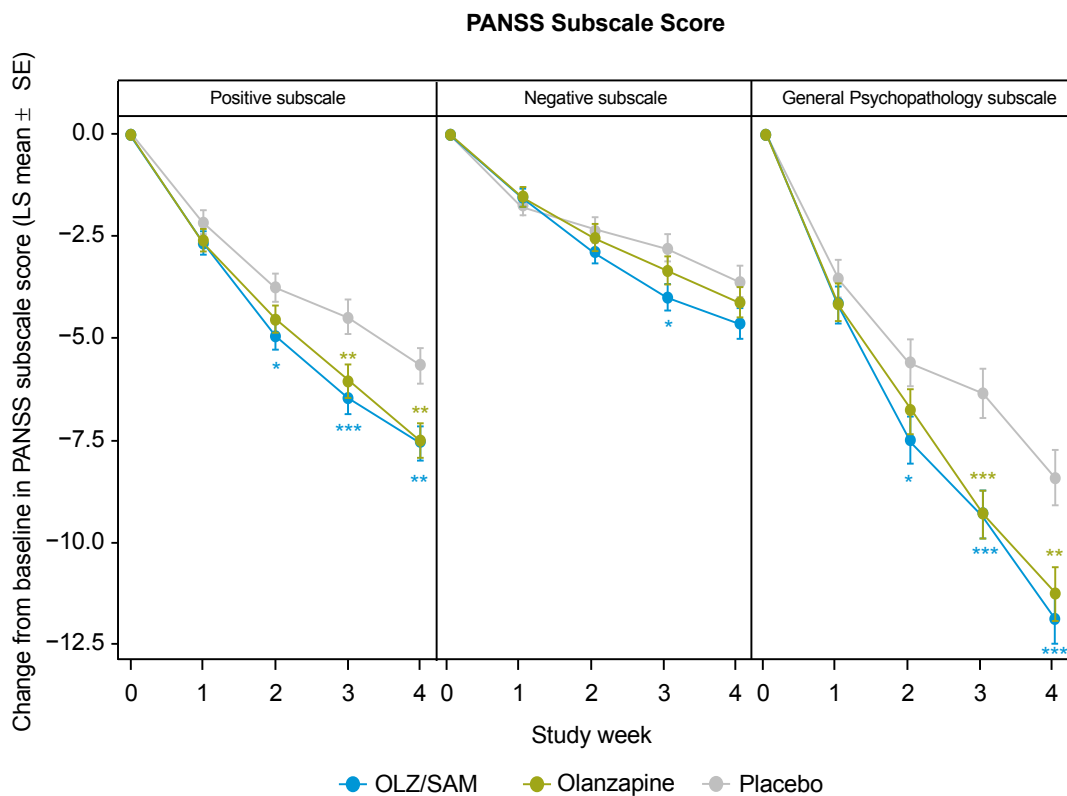
Abbreviation: OLZ/SAM, olanzapine/samidorphane.

Supplementary Table 2. Summary of extrapyramidal symptom scores from baseline to last on-treatment assessment

Measure	OLZ/SAM n = 134	Olanzapine n = 133	Placebo n = 134
AIMS total score, mean (SD)			
Baseline	0.2 (0.51)	0.2 (0.80)	0.4 (1.40)
Last on-treatment assessment	0.2 (0.91)	0.1 (0.75)	0.2 (0.78)
Change from baseline	0.1 (0.80)	0.0 (0.99)	-0.2 (1.27)
BARS (sum of objective and subjective scores), mean (SD)			
Baseline	0.3 (0.77)	0.3 (0.98)	0.4 (1.15)
Last on-treatment assessment	0.3 (0.86)	0.3 (0.72)	0.3 (0.97)
Change from baseline	0.0 (0.78)	-0.1 (1.04)	-0.1 (0.89)
BARS (global clinical assessment), mean (SD)			
Baseline	0.2 (0.43)	0.2 (0.57)	0.2 (0.64)
Last on-treatment assessment	0.1 (0.39)	0.2 (0.42)	0.2 (0.52)
Change from baseline	0.0 (0.47)	0.0 (0.61)	-0.1 (0.49)
SAS total score, mean (SD)			
Baseline	0.5 (1.02)	0.8 (2.43)	0.8 (2.21)
Last on-treatment assessment	0.4 (0.83)	0.6 (1.46)	0.7 (1.89)
Change from baseline	0.0 (0.78)	-0.3 (1.65)	-0.2 (1.45)

Abbreviations: AIMS, Abnormal Involuntary Movement Scale; BARS, Barnes Akathisia Rating Scale; OLZ/SAM, olanzapine/samidorphan; SAS, Simpson-Angus Scale.

Supplementary Figure 1. Change from Baseline in PANSS Subscales by Week (MMRM; Efficacy population)

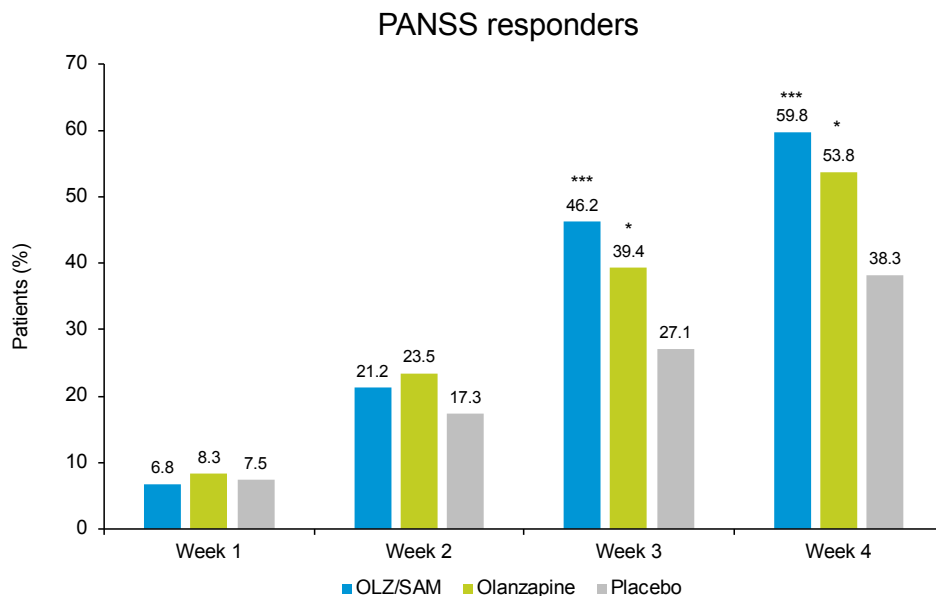


P values vs placebo: **P*<0.05; ***P*<0.01; ****P*<0.001.

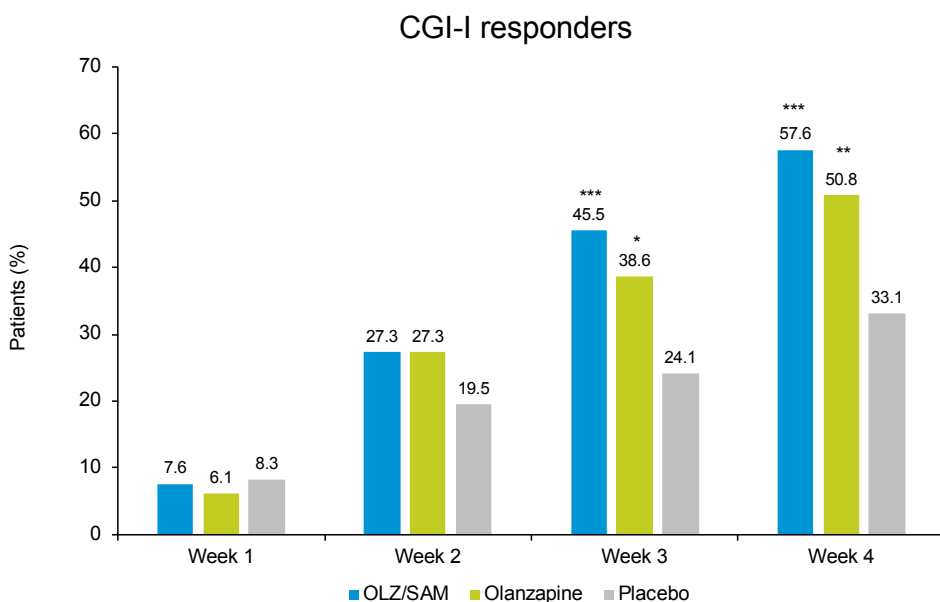
Abbreviations: LS, least squares; MMRM, mixed model with repeated measurements; OLZ/SAM, olanzapine/samidorphan; PANSS, Positive and Negative Syndrome Scale; SE, standard error.

Supplementary Figure 2. PANSS ($\geq 30\%$ improvement from baseline) (A) and CGI-I (score of ≤ 2) (B) Responders by Week (LOCF; efficacy population)

A)



B)

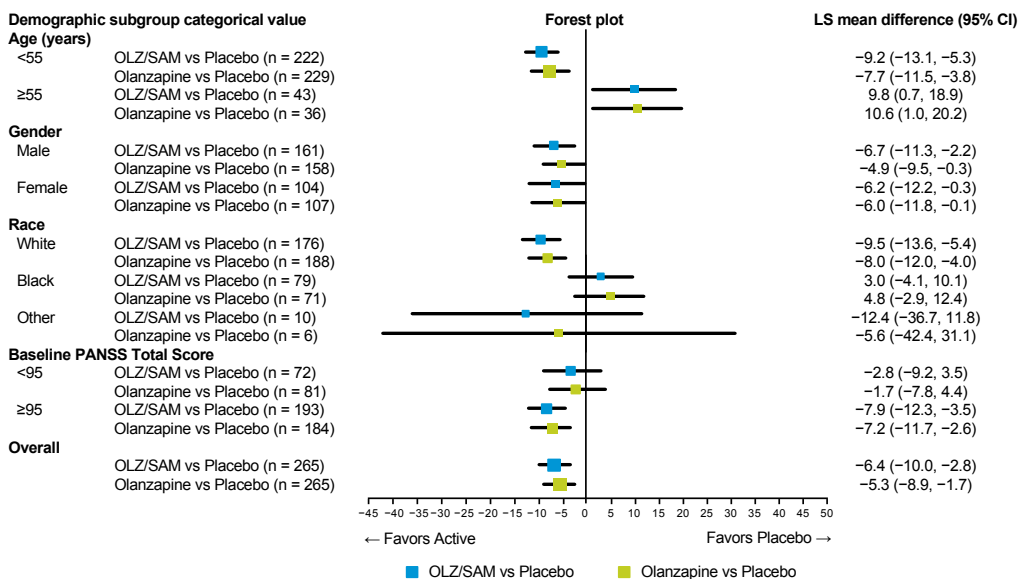


P value vs placebo: * $P < 0.05$; ** $P \leq 0.01$; *** $P < 0.001$.

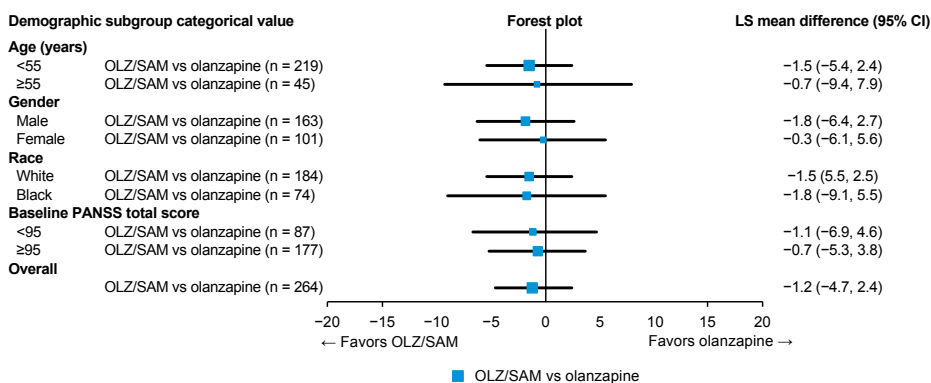
Abbreviations: CGI-I, Clinical Global Impression–Improvement; LOCF, last observation carried forward; OLZ/SAM, olanzapine/samidorphan; PANSS, Positive and Negative Syndrome Scale.

Supplementary Figure 3. Change from Baseline in PANSS Total Score at Week 4 in the Overall Efficacy Population and Key Subgroups for A) OLZ/SAM and olanzapine vs placebo and B) OLZ/SAM vs olanzapine (MMRM approach)

A)



B)



Abbreviations: CI, confidence interval; LS, least squares; MMRM, mixed-effects model for repeated measures; OLZ/SAM, olanzapine/samidorphan; PANSS, Positive and Negative Syndrome Scale.