



THE JOURNAL OF  
**CLINICAL PSYCHIATRY**

THE OFFICIAL JOURNAL OF THE AMERICAN SOCIETY OF CLINICAL PSYCHOPHARMACOLOGY

## **Supplementary Material**

**Article Title:** Impact of Paliperidone Palmitate Versus Oral Atypical Antipsychotics on Health Care Resource Use and Costs in Veterans With Schizophrenia

**Author(s):** Yinong Young-Xu, ScD, MS, MA; Mei Sheng Duh, MPH, ScD; Erik Muser, PharmD, MPH; Maral DerSarkissian, PhD; Elizabeth Faust, BA; Andrew Kageleiry, BS; Rachel H. Bhak, MS; Dong-Jing Fu, MD, PhD; Patrick Lefebvre, MA; and Brian Shiner, MD, MPH

**DOI Number:** 10.4088/JCP.16m10745

### **List of Supplementary Material for the article**

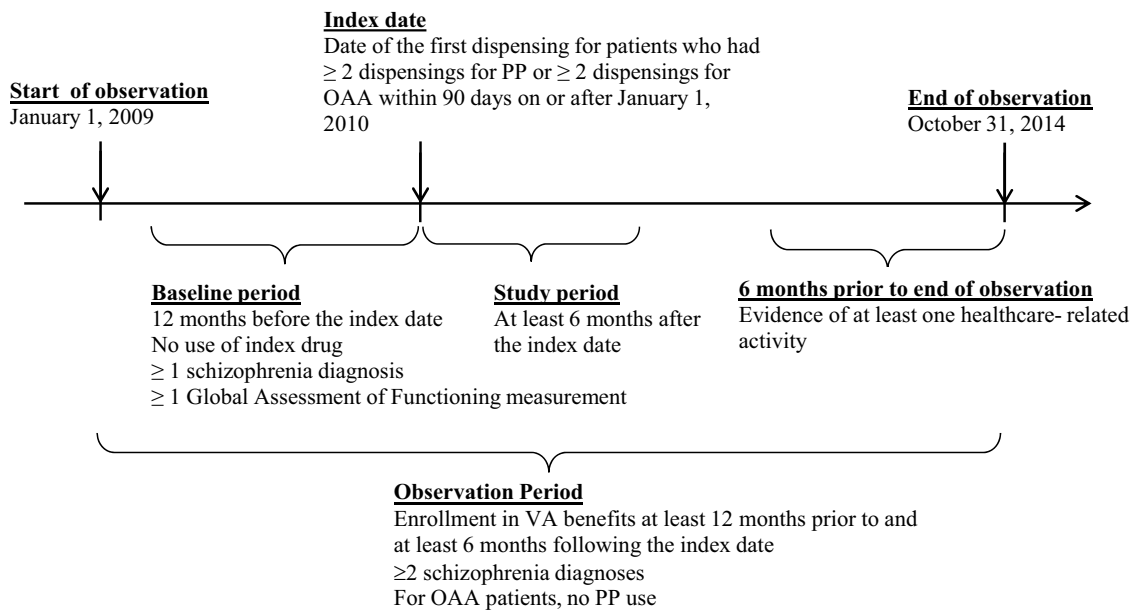
1. [eFigure 1](#) Study Schematic
2. [eFigure 2](#) Adjusted Economic Outcomes During the 12-Month Study Period
3. [eTable 1](#) Adjusted, Annualized Resource Utilization Evaluated During the 12-Month Study Period Following A Mental Health Inpatient Visit
4. [eTable 2](#) GPI Codes for Concomitant Medication for Mental Disorder

### **Disclaimer**

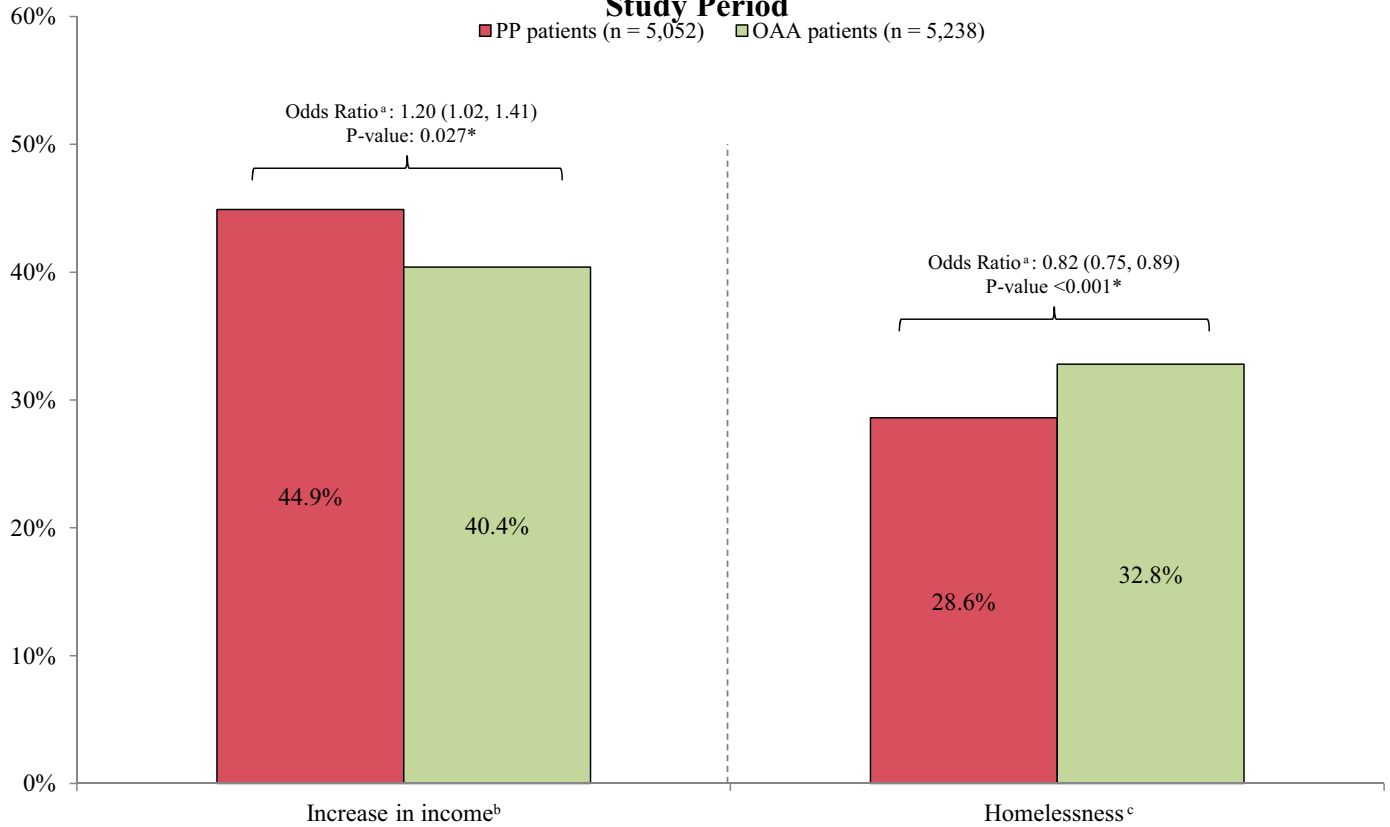
This Supplementary Material has been provided by the author(s) as an enhancement to the published article. It has been approved by peer review; however, it has undergone neither editing nor formatting by in-house editorial staff. The material is presented in the manner supplied by the author.

**Supplementary eFigure 1. Study Schematic**

---



## Supplementary eFigure 2. Adjusted Economic Outcomes During the 12-Month Study Period



**Notes:**

- a. Odds ratios and p-values were estimated from a weighted logistic regression across the two cohorts.
- b. Income is reported for the patients with means tests observations during the study period (21.8% of PP patients and 24.3% of OAA patients). Income during the study period is measured using the highest recorded income value. All values were inflated to \$2014 using the All Items component of the Consumer Product Index (CPI).
- c. Homelessness identified based on a ICD-9-CM diagnosis for V60.0 ("lack of housing") during the study period.

**Supplementary eTable 1. Adjusted, Annualized Resource Utilization Evaluated During the 12-Month Study Period Following a Mental Health Inpatient Visit**

All-cause resource utilization	All PP patients (n = 5,052)	All OAA patients (n = 5,238)	P value <sup>a</sup>
<b>Number of patients with a mental health inpatient stay, n (%)</b>	4,039 (79.9%)	4,338 (82.8%)	<0.001 *
<b>Inpatient stay within 7 days of discharge<sup>b</sup></b>	476 (11.8%)	627 (14.5%)	<0.001 *
Mental health stay	430 (10.6%)	559 (12.9%)	0.001 *
Long-term care stay	5 (0.1%)	10 (0.2%)	0.209
Other inpatient stay	68 (1.7%)	102 (2.4%)	0.031 *
<b>Outpatient service within 7 days of discharge<sup>b</sup></b>	3,770 (93.3%)	3,925 (90.5%)	<0.001 *
Emergency room visit	494 (12.2%)	677 (15.6%)	<0.001 *
Mental health intensive case management visit	1,082 (26.8%)	720 (16.6%)	<0.001 *
Other outpatient visits	3,517 (87.1%)	3,778 (87.1%)	0.987
<b>Inpatient stay within 30 days of discharge<sup>b</sup></b>	1,074 (26.6%)	1,263 (29.1%)	0.010 *
Mental health stay	937 (23.2%)	1,114 (25.7%)	0.009 *
Long-term care stay	10 (0.3%)	40 (0.9%)	<0.001 *
Other inpatient stay	241 (6.0%)	290 (6.7%)	0.175
<b>Outpatient service within 30 days of discharge<sup>b</sup></b>	3,951 (97.8%)	4,167 (96.1%)	<0.001 *
Emergency room visit	1,234 (30.5%)	1,283 (29.6%)	0.332
Mental health intensive case management visit	1,242 (30.8%)	870 (20.0%)	<0.001 *
Other outpatient visits	3,816 (94.5%)	4,097 (94.5%)	0.972

\* P value < 0.05.

**Notes:**

a. P values were computed using the weighted chi-square test for categorical variables.

b. Percentages are among those with a mental health inpatient stay during the 12-month study period.

Abbreviations: OAA = oral atypical antipsychotic; PP = paliperidone palmitate.

Supplementary eTable 2. GPI codes for concomitant medication for mental disorder

Category	Name	GPI
Antidepressant	MIRTAZAPINE	58 03 00 50 00
	ISOCARBOXAZID	58 10 00 10 00
	MOCLOBEMIDE	58 10 00 15 00
	PHENELZINE SULFATE	58 10 00 20 10
	SELEGILINE	58 10 00 27 00
	TRANLYCYPROMINE SULFATE	58 10 00 30 10
	NEFAZODONE HCL	58 12 00 50 10
	REBOXETINE MESYLATE	58 12 00 65 10
	TRAZODONE HCL	58 12 00 80 10
	VILAZODONE HCL	58 12 00 88 10
	VORTIOXETINE HBR	58 12 00 93 10
	CITALOPRAM HYDROBROMIDE	58 16 00 20 10
	ESCITALOPRAM	58 16 00 34 00
	ESCITALOPRAM OXALATE	58 16 00 34 10
	FLUOXETINE HCL	58 16 00 40 00
	FLUVOXAMINE MALEATE	58 16 00 45 10
	PAROXETINE HCL	58 16 00 60 00
	PAROXETINE MESYLATE	58 16 00 60 30
	SERTRALINE HCL	58 16 00 70 10
	DESVENLAFAXINE	58 18 00 20 00
	DESVENLAFAXINE SUCCINATE	58 18 00 20 20
	DULOXETINE HCL	58 18 00 25 10
	LEVOMILNACIPRAN	58 18 00 50 00
	LEVOMILNACIPRAN HCL	58 18 00 50 10
	EFFEXOR XR	58 18 00 90 10
	AMINEPTINE HCL	58 20 00 07 10
	AMITRIPTYLINE EMBONATE	58 20 00 10 05
	AMITRIPTYLINE HCL	58 20 00 10 10
	AMOXAPINE	58 20 00 20 00
	BUTRIPTYLINE HCL	58 20 00 23 10
	CLOMIPRAMINE HCL	58 20 00 25 10
	DESIPRAMINE DIBUDINATE	58 20 00 30 05
	DESIPRAMINE HCL	58 20 00 30 10
	DIBENZEPIN HCL	58 20 00 32 10
	DOTHIEPIN HCL	58 20 00 35 10
	DOXEPIN HCL	58 20 00 40 10
	IMIPRAMINE HCL	58 20 00 50 10
	IMIPRAMINE PAMOATE	58 20 00 50 20
	LOFEPRAMINE HCL	58 20 00 53 10
	MIANSERIN HCL	58 20 00 56 10
	NORTRIPTYLINE HCL	58 20 00 60 10
	PROTRIPTYLINE HCL	58 20 00 70 10
	TIANEPTINE SODIUM	58 20 00 76 10
	TRIMIPRAMINE	58 20 00 80 00
	TRIMIPRAMINE MALEATE	58 20 00 80 10
	RESERVE 3	58 30 00 02 00
	AGOMELATINE	58 30 00 04 00
	MAPROTILINE HCL	58 30 00 10 10
	NOMIFENSINE MALEATE	58 30 00 20 10
	BUPROPION HCL	58 30 00 40 10
	BUPROPION HYDROBROMIDE	58 30 00 40 20
	VILOXAZINE HCL	58 30 00 90 10
	TRAZODONE HCL-DIETARY MANAGEMENT PRODUCT	58 99 80 02 75
	CITALOPRAM & DIETARY MANAGEMENT PRODUCT	58 99 85 02 20
	FLUOXETINE HCL-DIETARY MANAGEMENT PRODUCT	58 99 85 02 45
	AMITRIPTYLINE HCL & DIETARY MANAGEMENT PRODUCT	58 99 87 02 10
	BUPROPION HCL-DIETARY MANAGEMENT PRODUCT	58 99 90 02 20
	DOXEPIN HCL (SLEEP)	60 40 00 30 10
	BUPROPION HCL	62 10 00 02 10
	FLUOXETINE HCL (PMDD)	62 20 60 40 00
	PAROXETINE MESYLATE (VASOMOTOR)	62 22 60 60 30
	PERPHENAZINE W/ AMITRIPTYLINE-DIAZEPAM	62 99 00 03 20
CHLORDIAZEPOXIDE-AMITRIPTYLINE	62 99 20 02 20	
PERPHENAZINE-AMITRIPTYLINE	62 99 40 02 60	
PERPHENAZINE-NORTRIPTYLINE	62 99 40 02 65	
OLANZAPINE-FLUOXETINE HCL	62 99 50 02 50	

Supplementary eTable 2. GPI codes for concomitant medication for mental disorder

Category	Name	GPI
Anxiolytics	ALPRAZOLAM	57 10 00 10 00
	BROMAZEPAM	57 10 00 15 00
	CHLORDIAZEPOXIDE	57 10 00 20 00
	CHLORDIAZEPOXIDE HCL	57 10 00 20 10
	CLOBAZAM (ANTIAXIETY)	57 10 00 25 00
	CLORAZEPATE DIPOTASSIUM	57 10 00 30 10
	CLOXAZOLAM	57 10 00 35 00
	DIAZEPAM	57 10 00 40 00
	ETHYL LOFLAZEPATE	57 10 00 45 10
	HALAZEPAM	57 10 00 50 00
	KETAZOLAM	57 10 00 55 00
	LORAZEPAM	57 10 00 60 00
	OXAZEPAM	57 10 00 70 00
	PRAZEPAM	57 10 00 80 00
	TETRAZEPAM	57 10 00 90 00
	BUSPIRONE HCL	57 20 00 05 10
	CHLORMEZANONE	57 20 00 10 00
	DROPERIDOL	57 20 00 30 00
	ETIFOXINE HCL	57 20 00 33 10
	HYDROXYZINE HCL	57 20 00 40 10
	HYDROXYZINE PAMOATE	57 20 00 40 20
	MEPROBAMATE	57 20 00 50 00
	TYBAMATE	57 20 00 60 00
	ALPRAZOLAM INTENSOL	57 99 90 02 10
	DIAZEPAM-DIETARY MANAGEMENT PRODUCT	57 99 90 02 20
	ESTAZOLAM	60 20 10 05 00
	FLUNITRAZEPAM	60 20 10 08 00
	FLURAZEPAM HCL	60 20 10 10 10
	LOPRAZOLAM MESYLATE	60 20 10 17 20
	LORMETAZEPAM	60 20 10 20 00
	MIDAZOLAM	60 20 10 25 00
	MIDAZOLAM HCL	60 20 10 25 10
	MIDAZOLAM HCL-SODIUM CHLORIDE	60 20 10 25 12
	MIDAZOLAM MALEATE	60 20 10 25 20
	NITRAZEPAM	60 20 10 26 00
	QUAZEPAM	60 20 10 28 00
	TEMAZEPAM	60 20 10 30 00
	TRIAZOLAM	60 20 10 40 00
	TEMAZEPAM-DIETARY MANAGEMENT PRODUCT	60 99 80 02 70
	CHLORDIAZEPOXIDE HCL	62 99 20 02 25
	CLONAZEPAM	72 10 00 10 00
DIAZEPAM (ANTICONVULSANT)	72 10 00 30 00	
Mood Stabilizer	LITHIUM	59 50 00 10 10
	LITHIUM CITRATE	59 50 00 10 20
	GABAPENTIN (PHN)	62 54 00 30 00
	GABAPENTIN ENACARBIL	62 56 00 30 20
	DEPAKOTE ER	72 50 00 10 10
	VALPROATE SODIUM	72 50 00 20 10
	VALPROATE MAGNESIUM	72 50 00 20 20
	STAVZOR	72 50 00 30 00
	CARBAMAZEPINE	72 60 00 20 00
	GABAPENTIN	72 60 00 30 00
	LAMICTAL (BLUE)	72 60 00 40 00
	OXCARBAZEPINE	72 60 00 46 00
	TOPIRAMATE	72 60 00 75 00
	GABAPENTIN-DIETARY MANAGEMENT PRODUCT	72 99 60 02 30