



THE JOURNAL OF
CLINICAL PSYCHIATRY

THE OFFICIAL JOURNAL OF THE AMERICAN SOCIETY OF CLINICAL PSYCHOPHARMACOLOGY

Supplementary Material

Article Title: Self-Harm, Self-Harm Ideation, and Mother-Infant Interactions: A Prospective Cohort Study

Author(s): Hannah Gordon, MD; Selina Nath, PhD; Kylee Trevillion, PhD; Paul Moran, MD; Susan Pawlby, PhD; Louise Newman, PhD; Louise M. Howard, PhD; and Emma Molyneaux, PhD

DOI Number: <https://doi.org/10.4088/JCP.18m12708>

List of Supplementary Material for the article

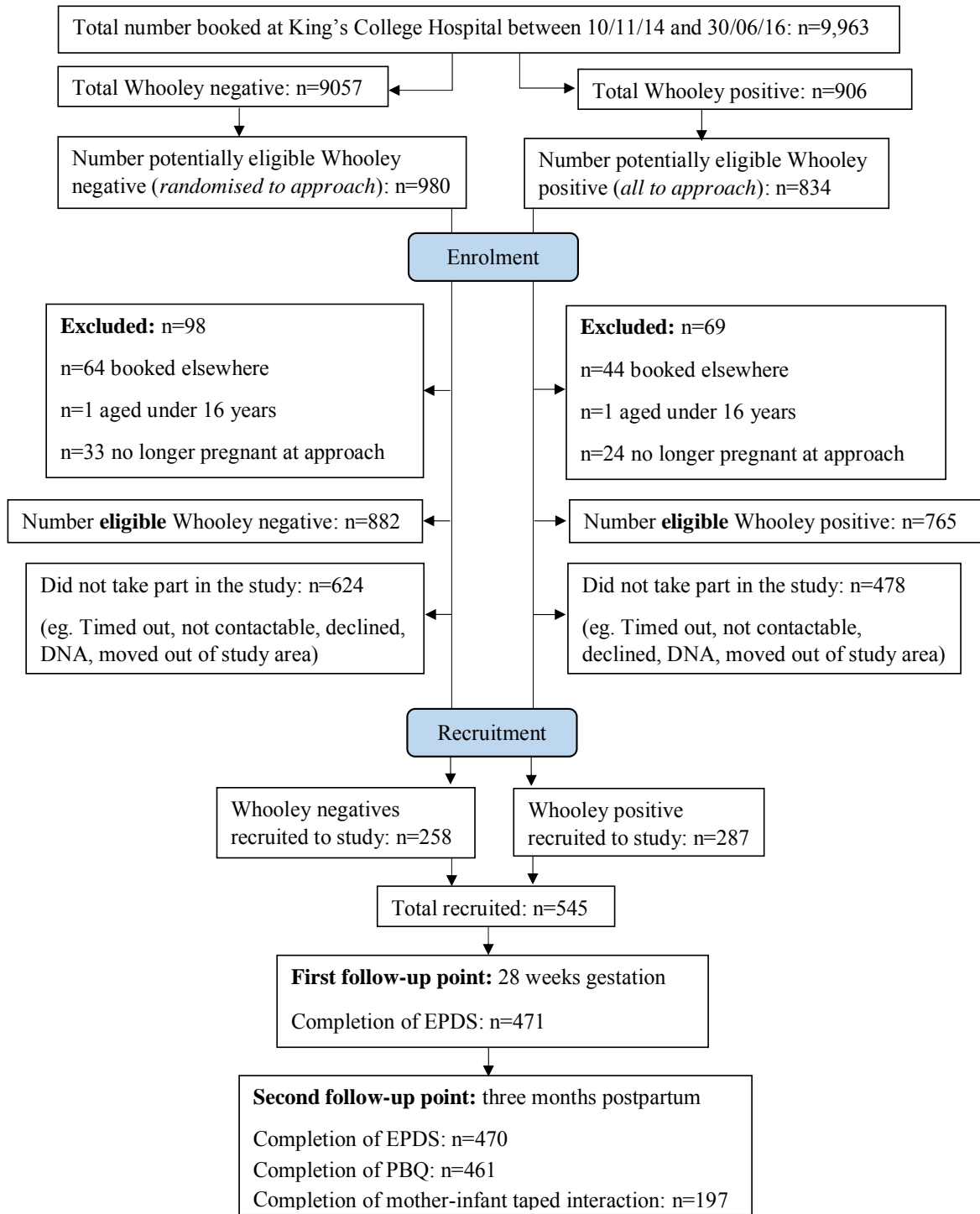
1. [Figure 1](#) Participant selection
3. [Table 1](#) Unweighted demographics of participants lost to follow-up at three months postpartum

Disclaimer

This Supplementary Material has been provided by the author(s) as an enhancement to the published article. It has been approved by peer review; however, it has undergone neither editing nor formatting by in-house editorial staff. The material is presented in the manner supplied by the author.

Supplementary material

Supplementary Figure 1: Participant selection



Supplementary Table 1: Unweighted demographics of participants lost to follow-up at three months postpartum				
		Data at three months postpartum (n=474)	Lost to follow up at three months postpartum (n=71)	P value ^a
		<i>Number (%)</i>	<i>Number (%)</i>	
Age	16 -24	43 (9.1)	13 (18.3)	0.122
	25 – 29	86 (18.1)	15 (21.1)	
	30 – 34	161 (34.0)	18 (25.4)	
	35 -39	146 (30.8)	17 (23.9)	
	≥40	38 (8.0)	8 (11.3)	
Ethnicity	White (including English, Welsh, Scottish, Irish, British, other white)	260 (54.9)	24 (33.8)	0.020
	Black (including British, Caribbean, African, other black)	146 (30.8)	31 (43.7)	
	Mixed (including white and black Caribbean, white and black African, white and Asian, other mixed/multiple ethnic)	19 (4.0)	4 (5.6)	
	Asian (including British Indian, British Bangladeshi, British Pakistani, British Chinese, other Asian)	21 (4.4)	4 (5.6)	
	Other (including Arab, gypsy or traveller, other)	28 (5.9)	8 (11.3)	
Born in UK	Yes	241 (50.8)	21 (29.6)	0.001
	No	233 (49.2)	50 (79.4)	
Yearly household income	£0-£5475	32 (7.3)	13 (18.3)	<0.001
	£5476-£14,999	26 (5.5)	4 (5.6)	

	£15,000-£30,999	60 (12.8)	11 (15.5)	
	£31,000-£45,999	56 (11.9)	4 (5.6)	
	£46,000-£60,999	58 (12.4)	5 (7.0)	
	£61,000+	138 (29.4)	7 (9.9)	
	Prefer not to say	97 (20.7)	27 (38.0)	
Highest qualification	GCSE or below	50 (10.6)	15 (21.1)	<0.001
	A-levels or vocational training	87 (18.4)	22 (31.0)	
	University or professional	337 (71.1)	34 (47.9)	
Relationship status	Single	48 (10.1)	14 (19.7)	0.009
	Partnered, not cohabiting	66 (13.9)	16 (22.5)	
	Married or cohabiting	351 (74.1)	41 (57.8)	
	Separated, divorced, widowed	9 (1.9)	0 (0.0)	
Number of other children	0	232 (49.0)	39 (54.9)	0.056
	1-2	221 (46.6)	25 (35.2)	
	3+	21 (4.4)	7 (9.9)	
EPDS score at baseline	<13	356 (75.7)	47 (66.2)	0.085
	≥13	114 (24.3)	24 (33.8)	
Past history of self-harm	No	408 (86.3)	60 (84.5)	0.692
	Yes	65 (13.7)	11 (15.5)	
Whooley status	Negative	236 (49.8)	22 (31.0)	0.003
	Positive	238 (50.2)	49 (69.0)	

^a Significant test was performed to compare the associations between variables. Pearson chi² test used for categorical variables and t test for continuous variables.