



Supplementary Material

Article Title: The Long-Term Effects of Maternal Postnatal Depression on a Child's Intelligence Quotient: A Meta-Analysis of Prospective Cohort Studies Based on 974 Cases

Authors: Guoyuan Sui, PhD; Bochen Pan, PhD; Guangcong Liu, MD; Guangying Liu, MD; and Lie Wang, MD

DOI Number: 10.4088/JCP.15r10124

List of Supplementary Material for the article

1. [eTable 1](#) Ottawa quality assessment scale cohort studies
2. [eFigure 1](#) Forest plot of the associations between maternal postnatal depression and full IQ among children
3. [eFigure 2](#) Associations between maternal postnatal depression and full IQ among children: subgroup analysis based on socio-economic status
4. [eFigure 3](#) Associations between maternal postnatal depression and full IQ among children: subgroup analysis based on child's age at evaluation
5. [eFigure 4](#) Associations between maternal postnatal depression and full IQ among children: subgroup analysis based on study quality
6. [eFigure 5](#) Associations between maternal postnatal depression and full IQ among children: subgroup analysis based on diagnostic method of postnatal depression
7. [eFigure 6](#) Funnel plot of eligible studies in full IQ

Disclaimer

This Supplementary Material has been provided by the author(s) as an enhancement to the published article. It has been approved by peer review; however, it has undergone neither editing nor formatting by in-house editorial staff. The material is presented in the manner supplied by the author.

© Copyright 2016 Physicians Postgraduate Press, Inc.

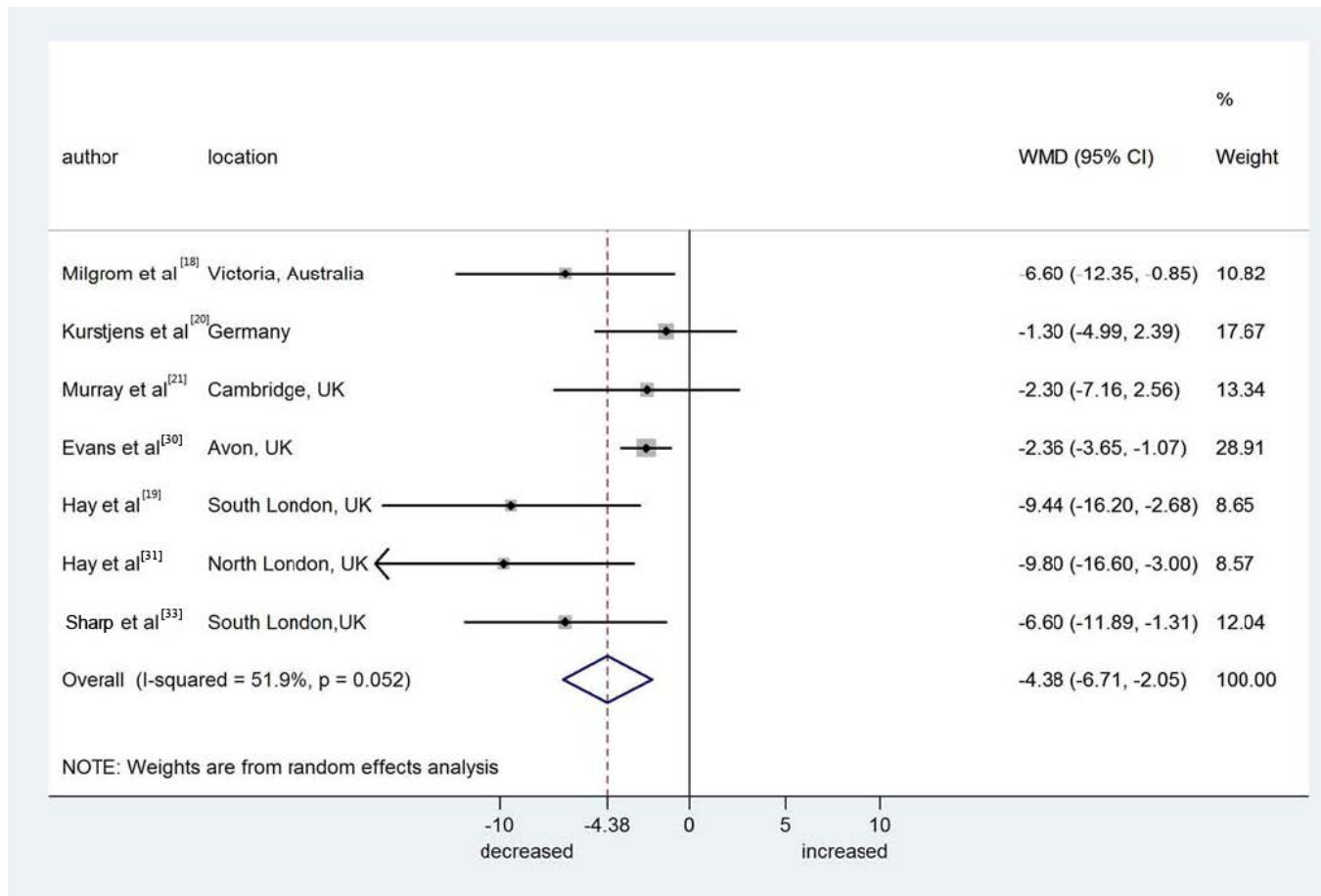
eTable 1 Ottawa quality assessment scale cohort studies

Author	1	2	3	4	5	6	7	8	Total score
Milgrom et al ¹⁸	1	0	1	1	0	1	1	0	5
Kurstjens et al ²⁰	1	1	1	1	0	1	1	1	7
Murray et al ²¹	1	1	1	1	1	1	1	1	8
Evans et al ³⁰	1	1	0	1	0	1	1	0	5
Sharp et al (South London UK) ³³	1	1	1	1	0	1	1	1	7
Hay et al (South London UK) ¹⁹	1	1	1	1	0	1	1	1	7
Hay et al (North London UK) ³¹	1	1	1	1	0	1	1	1	7
McMahon et al ³²	1	1	1	1	0	1	1	1	7
Kersten-Alvarez et al ²⁹	1	0	0	1	2	1	1	1	7

1. Representativeness of the exposed cohort; 2. Selection of the non-exposed cohort

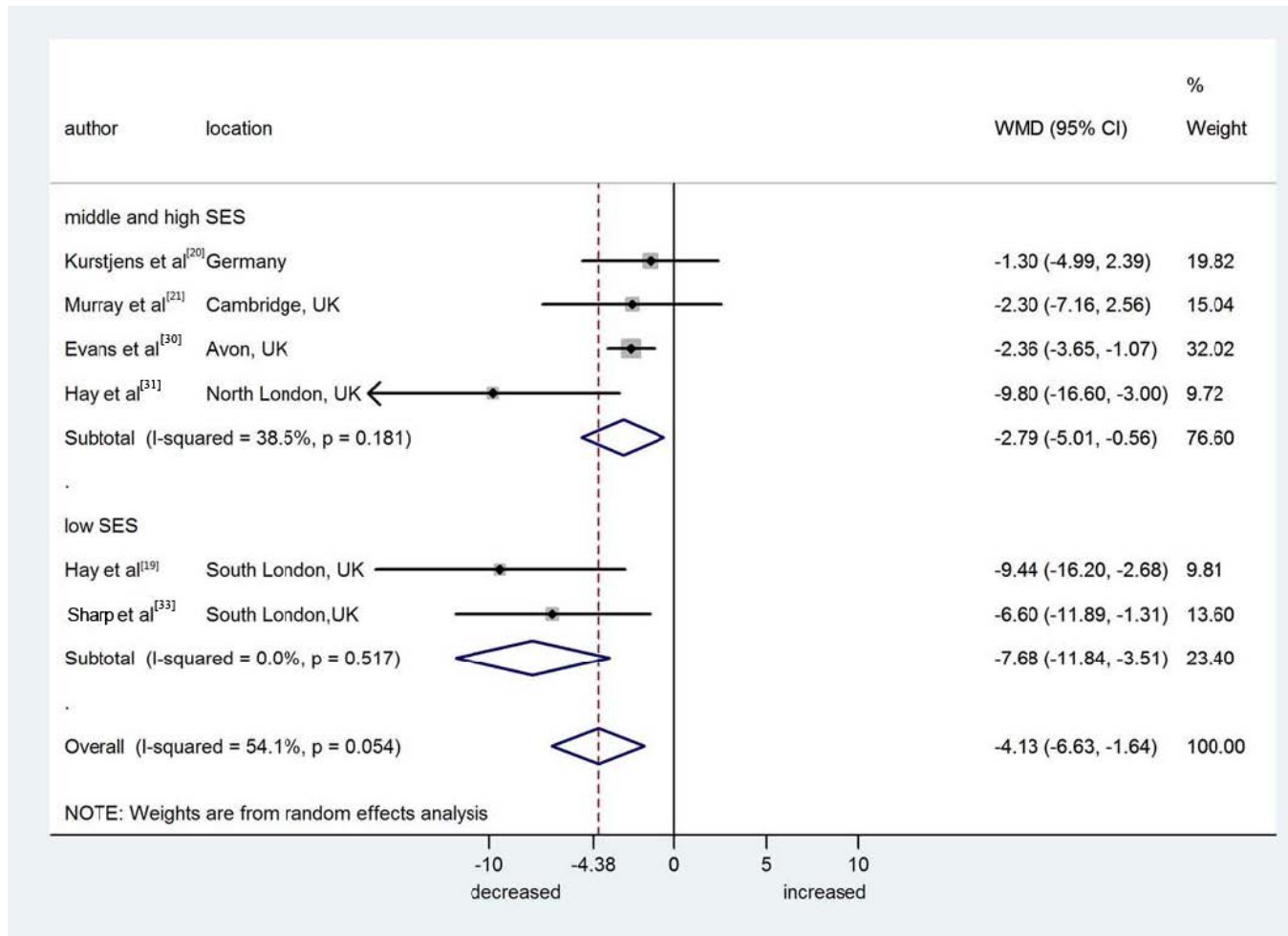
3. Ascertainment of exposure; 4. Demonstration that outcome of interest was not present at start of study; 5. Comparability of cohorts on the basis of the design or analysis; 6. Assessment of outcome; 7. Was follow-up long enough for outcomes to occur; 8. Adequacy of follow-up of cohorts

eFigure 1: Forest plot of the associations between maternal postnatal depression and full IQ among children



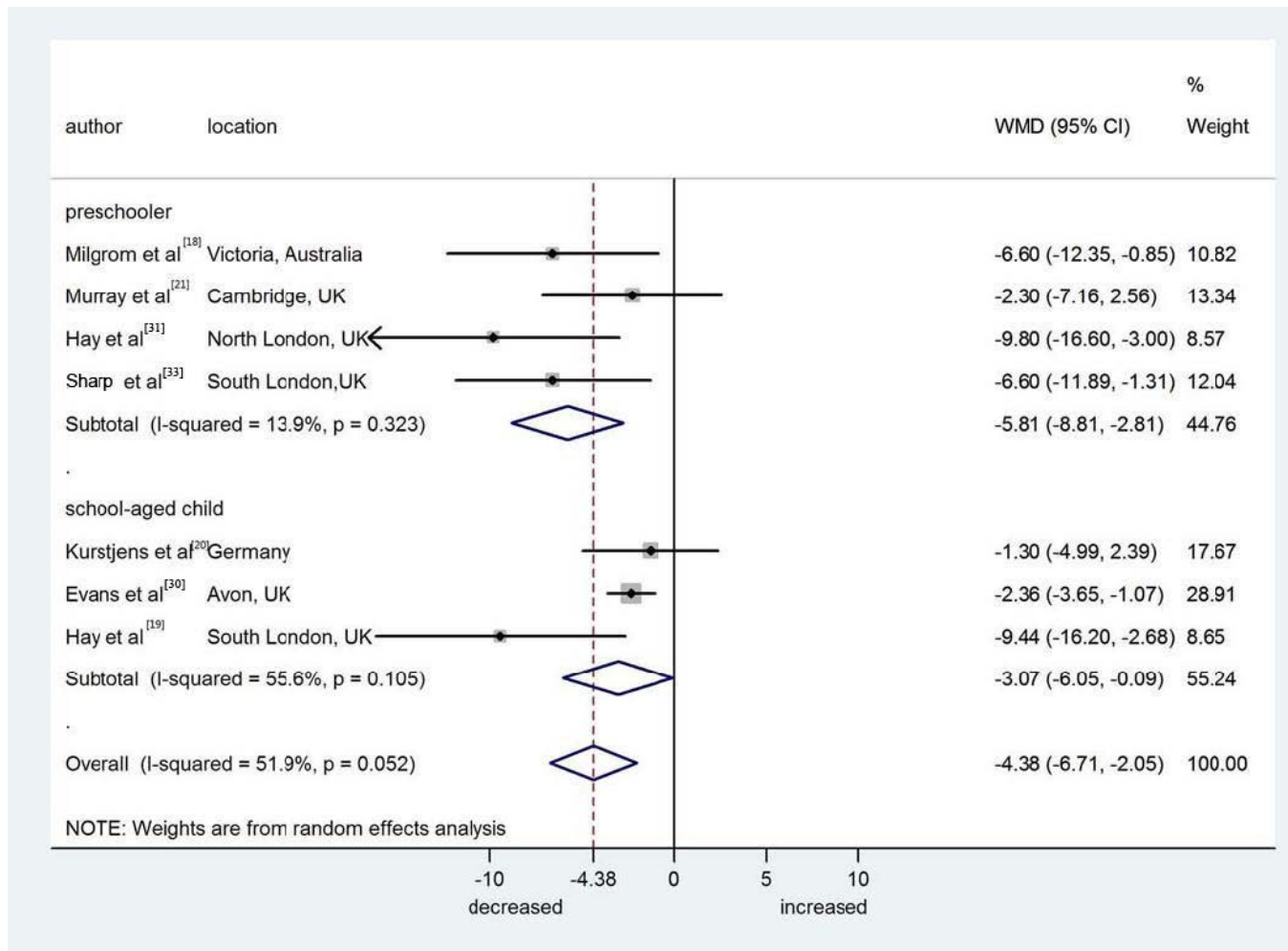
Abbreviations: IQ=intelligence quotient, WMD=weighted mean difference

eFigure 2: Associations between maternal postnatal depression and full IQ among children: subgroup analysis based on socio-economic status



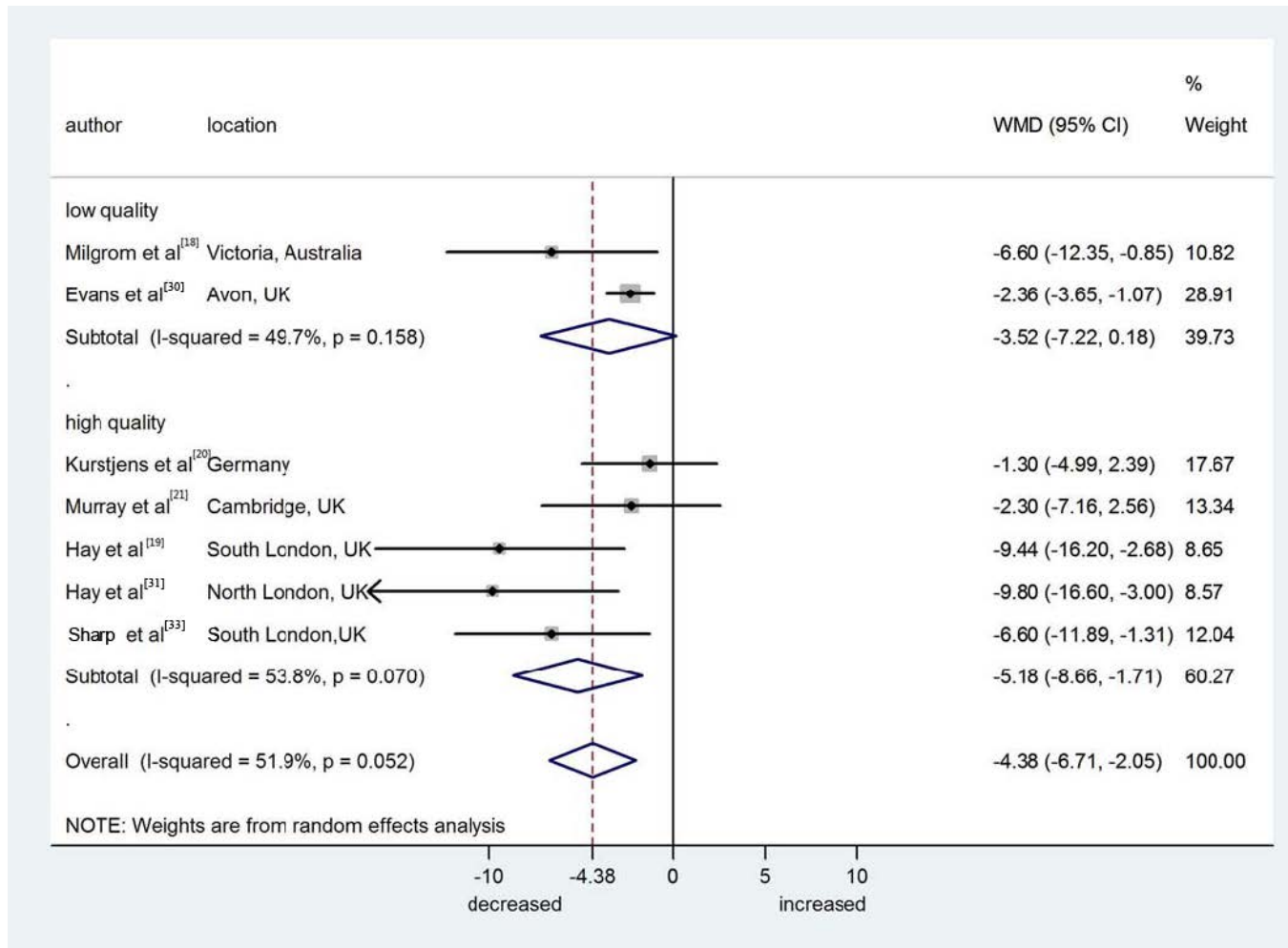
Abbreviations: IQ=intelligence quotient, SES=socioeconomic status, WMD=weighted mean difference

eFigure 3: Associations between maternal postnatal depression and full IQ among children: subgroup analysis based on child's age at evaluation



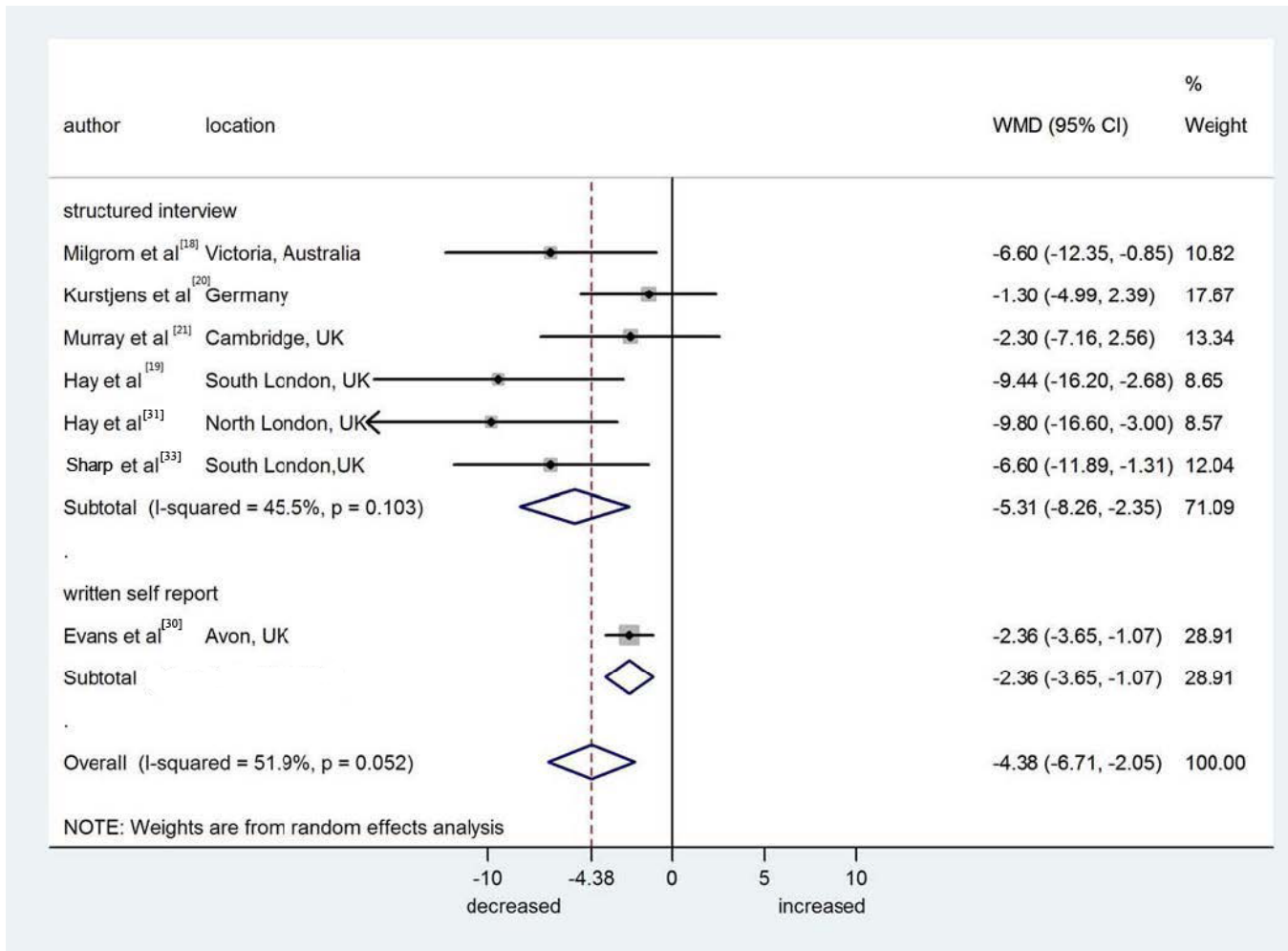
Abbreviations: IQ=intelligence quotient, WMD=weighted mean difference

eFigure 4: Associations between maternal postnatal depression and full IQ among children: subgroup analysis based on study quality



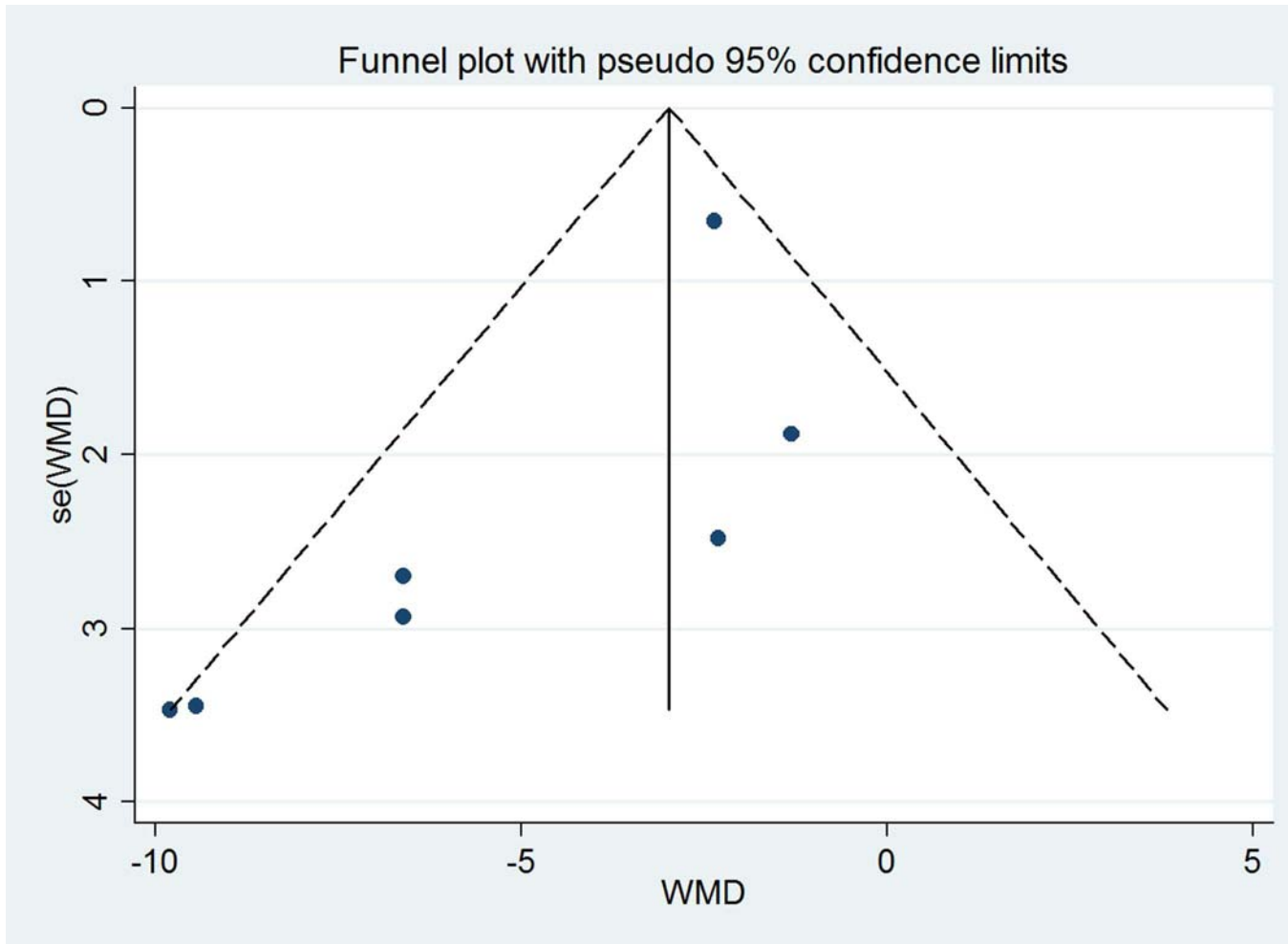
Abbreviations: IQ=intelligence quotient, WMD=weighted mean difference

eFigure 5: Associations between maternal postnatal depression and full IQ among children: subgroup analysis based on diagnostic method of postnatal depression



Abbreviations: IQ=intelligence quotient, WMD=weighted mean difference

eFigure 6: Funnel plot for eligible studies in full IQ



Abbreviations: IQ=intelligence quotient, WMD=weighted mean difference