



Supplementary Material

Article Title: How Interpersonal Psychotherapy Changes the Brain: A Study of fMRI in Borderline Personality Disorder

Author(s): Paola Bozzatello, MD, PhD; Rosalba Morese, PhD; Maria Consuelo Valentini, MD; Paola Rocca, MD; and Silvio Bellino, MD

DOI Number: <https://doi.org/10.4088/JCP.21m13918>

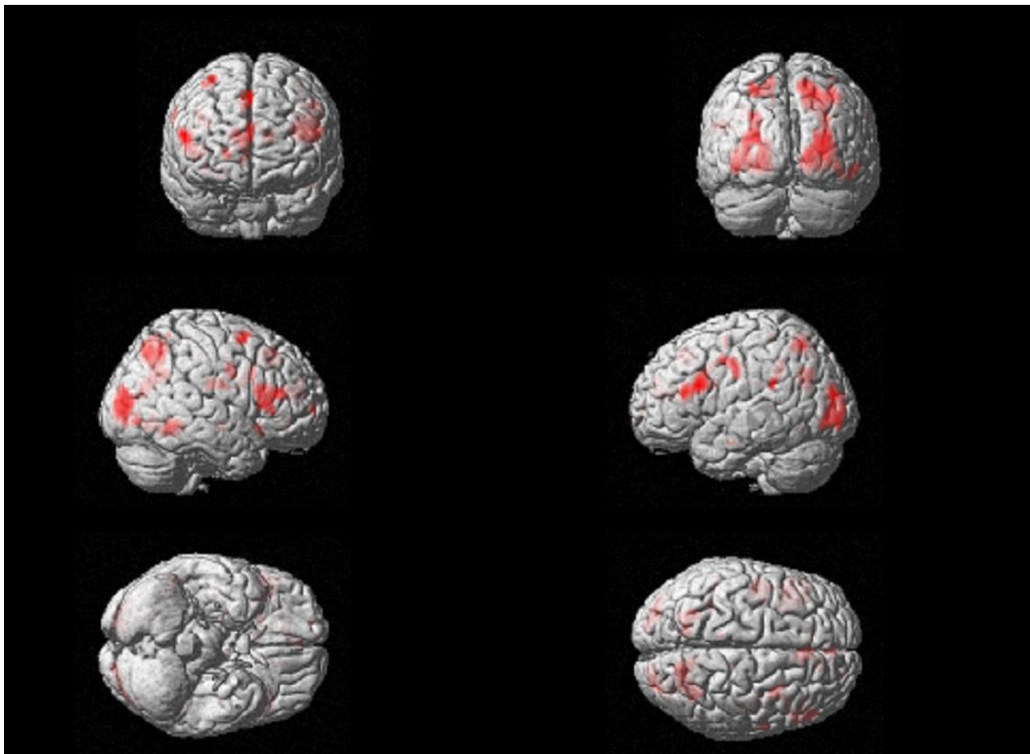
List of Supplementary Material for the article

1. **Figure 1** Whole-brain contrast maps for *Post versus Pre: Unresolved life event condition versus neutral condition*, projected on a standard rendered SPM template brain
2. **Table 1** List of anatomical regions ($p < 0.05$ corrected). IPT-BPD-R group > waiting list condition group for Post > Pre

Disclaimer

This Supplementary Material has been provided by the author(s) as an enhancement to the published article. It has been approved by peer review; however, it has undergone neither editing nor formatting by in-house editorial staff. The material is presented in the manner supplied by the author.

Supplementary Figure 1. Whole-brain contrast maps for *Post versus Pre: Unresolved life event condition versus neutral condition*, projected on a standard rendered SPM template brain.



Supplementary Table 1. List of anatomical regions ($p < 0.05$ corrected). IPT-BPD-R group > waiting list condition group for Post > Pre

Anatomical Region	MNI Coordinates			Z-score	T-value	P-value
	X	Y	Z			
<i>Unresolved condition > neutral condition</i>						
Right Temporal Parietal Junction	45	-52	34	4.22	3.30	.049
	39	-48	29	3.11	2.80	.052
Left Temporal Parietal Junction	-56	-42	23	2.88	2.35	.075
	-48	-39	32	2.14	2.33	.092
Right Anterior Cingulate Cortex	-4	37	8	4.13	4.56	.037
	-7	25	10	3.02	3.11	.051
	-5	41	12	2.59	2.62	.078
Left Dorsal Prefrontal Cortex	-29	45	8	2.65	2.40	.083
	-34	47	5	2.31	2.53	.079
Precuneus	0	-52	46	2.42	2.57	.081