

Supplementary Material

Article Title: Clinical Effectiveness of Intravenous Racemic Ketamine Infusions in a Large Community Sample of Patients With Treatment-Resistant Depression, Suicidal Ideation, and Generalized Anxiety Symptoms: A Retrospective Chart Review

Author(s): Patrick A. Oliver, MD; Andrew D. Snyder, MD; Richard Feinn, PhD; Stanislav Malov, MD; Gray McDiarmid, BS; and Albert J. Arias, MD, MS

DOI Number: <https://doi.org/10.4088/JCP.21m14336>

List of Supplementary Material for the article

1. [Table 1](#) Demographic Characteristics of Patients
2. [Table 2](#) Predictors of Treatment Response and Remission Odds Ratio (95% CI)
3. [Figure 1](#) Mean GAD Total Score Across Weeks
4. [Figure 2](#) Multilevel Longitudinal Model estimate of Mean PHQ-9 Total Score Across Time

Disclaimer

This Supplementary Material has been provided by the author(s) as an enhancement to the published article. It has been approved by peer review; however, it has undergone neither editing nor formatting by in-house editorial staff. The material is presented in the manner supplied by the author.

Supplementary Table 1: Demographic Characteristics of Patients

Demographics	Frequency	Percentage %
Age		
15-21	39	9.3
22-30	80	19.0
31-45	142	33.8
46-64	120	28.6
65+	39	9.3
Mean±SD	41.7±15.4	
Sex		
Female	226	53.9
Male	193	46.1
BMI		
Underweight	10	3.3
Normal	124	40.4
Overweight	88	28.7
Obese	85	27.7
Mean±SD	27.2 ± 6.5	
Substance Use		
Tobacco	89	21.3
Alcohol	161	38.3
Illegal Drugs	118	28.0
Previous Treatments		
ECT	36	9.0
TMS	103	24.8
Prior Ketamine	49	22.0
Addiction Treatment	36	8.3
Failed Two Antidepressants	348	80.3
Failed Three Antidepressants	286	66.0
Currently on Antidepressant	349	81
Psychological		
Psychosis	29	7.9
Personality Disorder	18	5.0
Suicide Attempt	118	28.3
Suicide Plan	50	11.9
Suicide Ideation	207	49.5
Taking Benzodiazepines	177	43.8

Note that not all variables were available for all subjects and the reported percentage is from the number from which data were available for that specific variable. For substance use not have detailed data on whether the substance use history was active, recent, or a past history as that was not systematically collected with a structured interview. Patients were recorded as having a substance use history if they reported significant past, recent, or current use of illicit drugs, alcohol, or tobacco/nicotine.

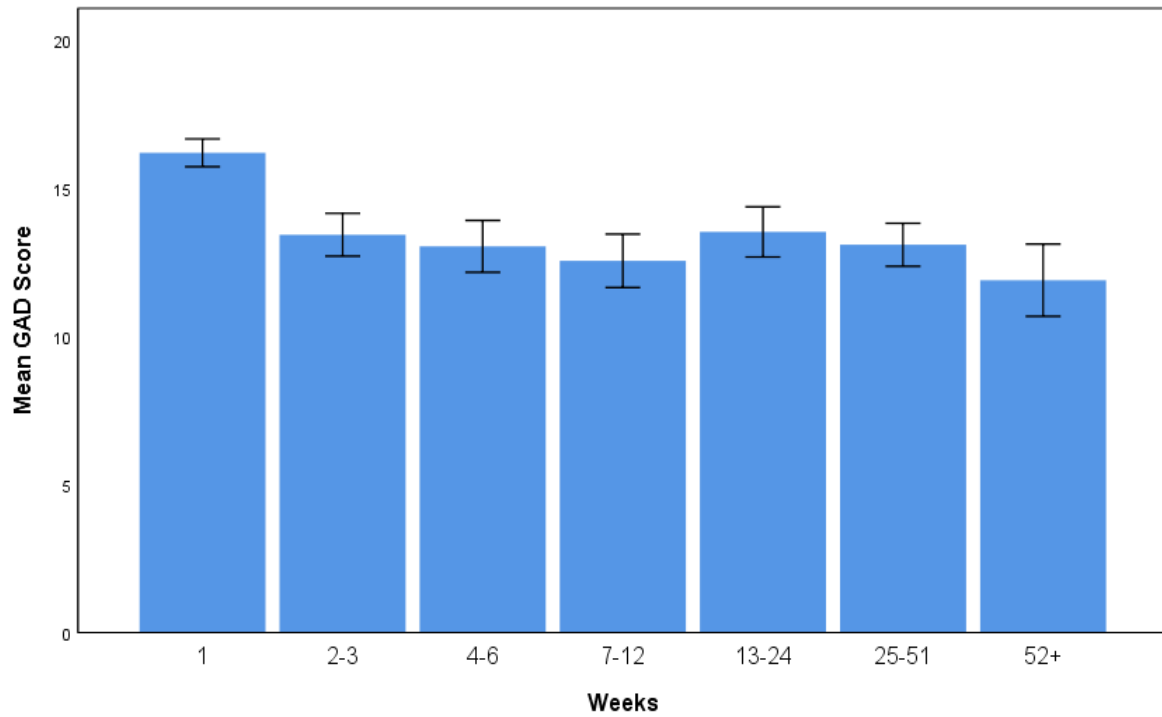
Supplementary Table 2:

Predictors of Treatment Response and Remission Odds Ratio (95% CI)

Demographics	Response		Remission	
	OR	P-Value	OR	P-Value
Age				
15-21 (39)	reference		reference	
22-30 (80)	1.12 (0.49-2.59)	.785	1.45 (0.52-4.05)	.480
31-45 (142)	0.78 (0.36-1.70)	.533	2.42 (0.93-6.27)	.070
46-64 (120)	0.74 (0.38-1.62)	.448	2.43 (0.93-6.36)	.071
65+ (39)	1.06 (0.41-2.76)	.903	2.72 (0.91-8.19)	.075
Sex				
Female (226)	reference		reference	
Male (193)	1.01 (0.68-1.49)	.967	0.89 (0.59-1.36)	.602
Psychosis				
No (33)	reference		reference	
Yes (29)	2.75 (0.87-8.71)	.086	1.52 (0.49-4.76)	.470
Denies (307)	1.09 (0.52-2.28)	.830	1.39 (0.60-3.21)	.446
Suicidal Ideation				
No (86)	reference		reference	
Yes (200)	0.84 (0.50-1.40)	.501	0.75 (0.43-1.29)	.290
Denies (109)	1.10 (0.61-1.95)	.759	1.01 (0.56-1.84)	.974
Suicide Plan				
No (151)	reference		reference	
Yes (48)	1.82 (0.92-3.60)	.083	1.29 (0.65-2.57)	.465
Denies (197)	1.36 (0.89-2.09)	.158	1.03 (0.65-1.64)	.895
Suicide Attempt				
No (114)	reference		reference	
Yes (113)	1.31 (0.76-2.22)	.313	0.76 (0.43-1.33)	.335
Denies (167)	1.34 (0.83-2.17)	.229	0.93 (0.56-1.55)	.930
History of Substance Use Problem (self-reported)				
No (59)	reference		reference	
Yes (36)	1.19 (0.51-2.79)	.693	0.55 (0.21-1.44)	.220
Denies (46)	1.20 (0.54-2.67)	.654	0.54 (0.22-1.33)	.182

Note that “denies” was used when the chart specifically stated that the patient denies that historical variable, but it was also not recorded as a clear “yes” or “no”. Group size in parentheses in the leftmost column.

Supplementary Figure 1: Mean GAD Total Score Across Weeks



“GAD” = GAD-7 Generalized Anxiety Disorder-7 scale.

Supplementary Figure 2: Multilevel Longitudinal Model estimate of Mean PHQ-9 Total Score Across Time

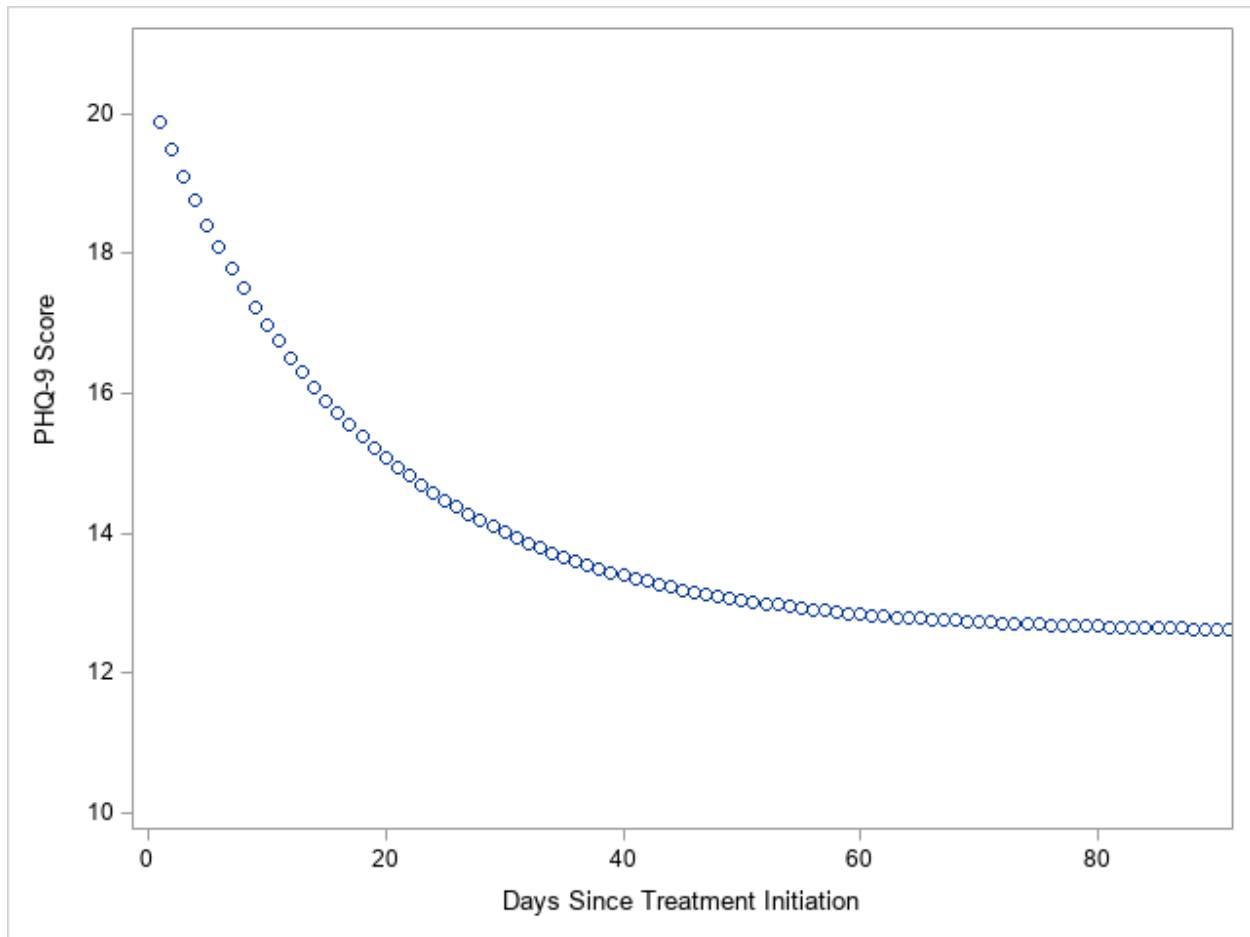


Figure shows the trajectory of PHQ-9 total score over time. The estimated intercept at day 0 was 20.3, the estimated amount of change was 7.7 points resulting in a lower asymptote of 12.5. The exponential rate parameter was -0.056 ($p < 0.001$), which resulted in an estimated total score of 17.7 at day 7, 14.0 at day 30 and 12.6 by day 90.