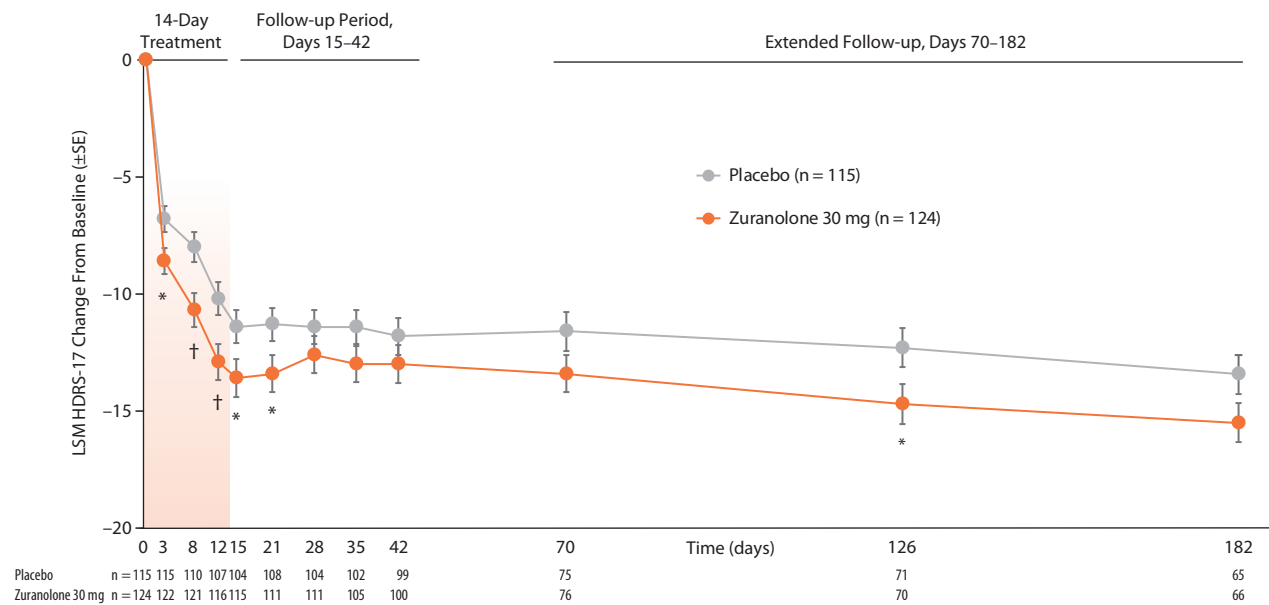
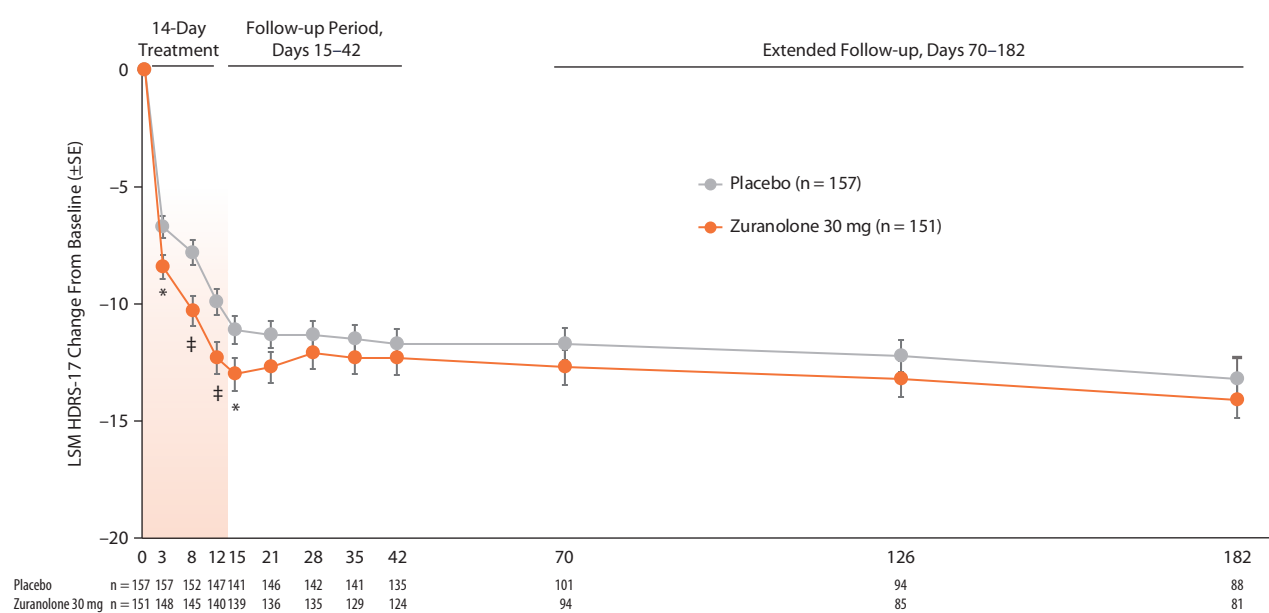


Figure 3. Change from Baseline in HDRS-17 Total Score (Post Hoc Analysis) in Patients Receiving Zuranolone 30 mg/d With (A) Baseline HDRS-17 Total Score ≥ 24 , (B) Measurable Drug Levels, and (C) Baseline HDRS-17 Total Score ≥ 24 Plus Measurable Drug Levels

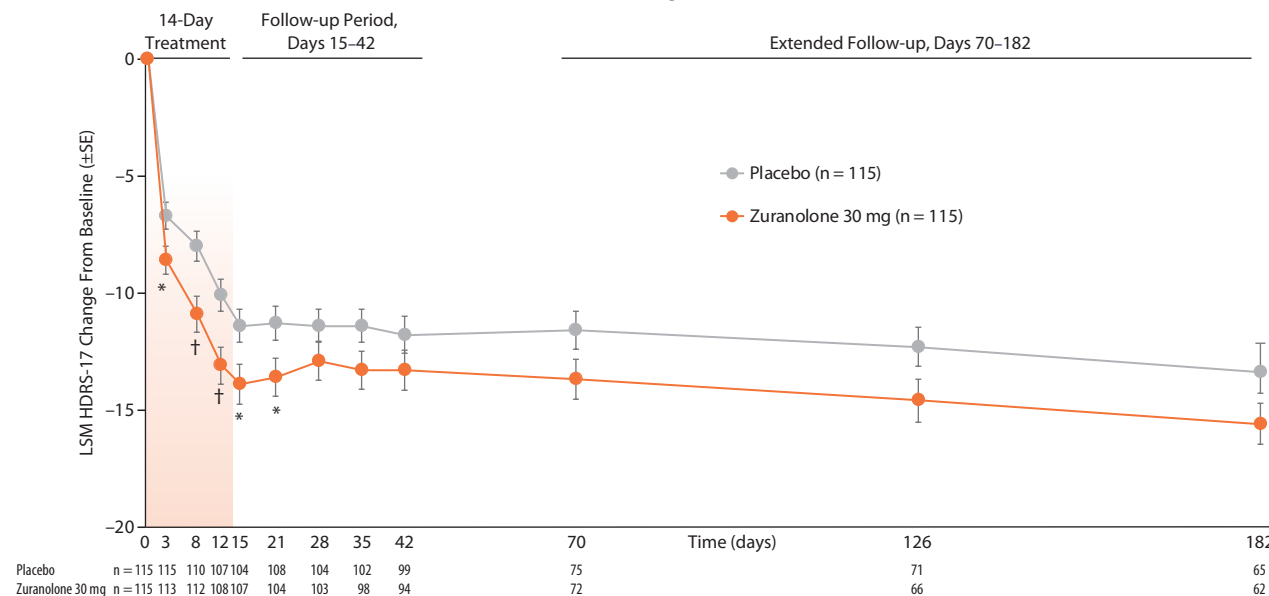
A. Patients With Baseline HDRS-17 Total Score $\geq 24^a$



B. Patients With Measurable Drug Levels^b



C. Patients With Baseline HDRS-17 Total Score ≥ 24 Plus Measurable Drug^c



^aModel used was the mixed effects for repeated measures with treatment (zuranolone 30 mg, zuranolone 20 mg, or placebo), baseline HDRS-17 total score, SOC antidepressant use at baseline (Yes or No), assessment time point, and time point-by-treatment interaction as fixed effects with unstructured covariance structure. Secondary and post hoc analyses were not adjusted for multiplicity. Shaded area indicates 14-day treatment period.

^bModel used was the mixed effects for repeated measures with treatment (zuranolone 30 mg, zuranolone 20 mg, or placebo), baseline HDRS-17 total score, SOC antidepressant use at baseline (Yes or No), assessment time point, and time point-by-treatment interaction as fixed effects with unstructured covariance structure. Secondary and post hoc analyses were not adjusted for multiplicity.

^cModel used was the mixed effects for repeated measures with treatment (zuranolone 30 mg, zuranolone 20 mg, or placebo), baseline HDRS-17 total score, SOC antidepressant use at baseline (Yes or No), assessment time point, and time point-by-treatment interaction as fixed effects with unstructured covariance structure. Secondary and post hoc analyses were not adjusted for multiplicity.

* $P < .05$ vs placebo. † $P < .01$ vs placebo. ‡ $P < .0025$ vs placebo. Abbreviations: HDRS-17 = 17-item Hamilton Depression Rating Scale total score, LSM = least-squares mean, n = number of patients on that day, SOC = standard of care.