

Supplementary Material

Article Title: Association of Attenuated Niacin Response With Inflammatory Imbalance and Prediction of Conversion to Psychosis From Clinical High-Risk Stage

Authors: TianHong Zhang, PhD; XuDong Xiao, MD; HaiSu Wu, PhD; JiaHui Zeng, MD; JiaYi Ye, MD; YuQing Gao, MD; YeGang Hu, PhD; LiHua Xu, PhD; YanYan Wei, PhD; XiaoChen Tang, PhD; HaiChun Liu, PhD; Tao Chen, PhD; XiaoHua Liu, PhD; ChunBo Li, PhD; LinLin Zhou, MD; XuMing Wu, MD; and JiJun Wang, PhD

DOI Number: 10.4088/JCP.22m14731

LIST OF SUPPLEMENTARY MATERIAL FOR THE ARTICLE

1. [Table 1](#) Two-year Follow-up Clinical and Cognitive Variables, Comparison Between CHR-C and CHR-NC
2. [Figure 1](#) ROC Curve and Cut-off Points of the LogEC50 and Span With Relative Sensitivity and Specificity to Discriminate CHR From HC

DISCLAIMER

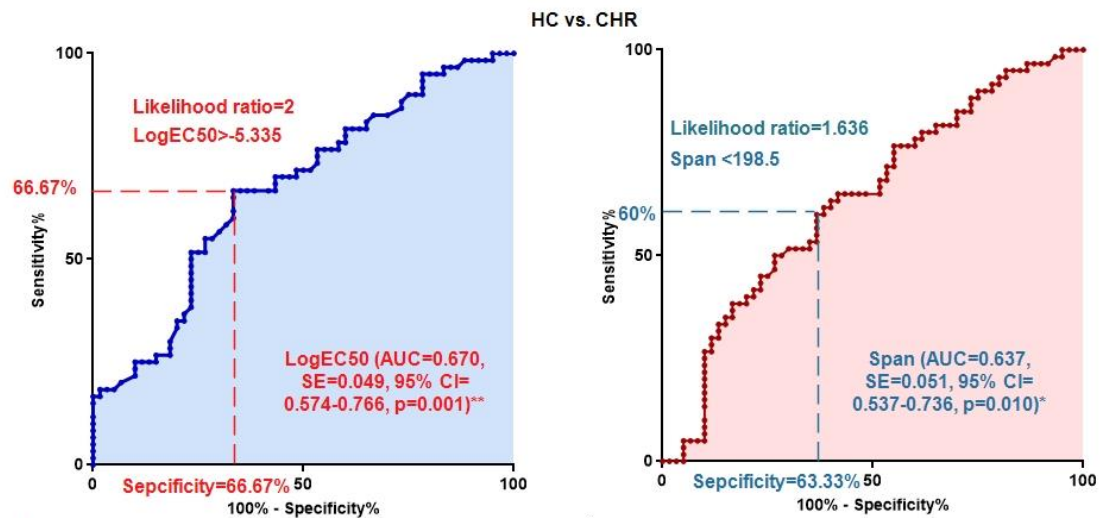
This Supplementary Material has been provided by the author(s) as an enhancement to the published article. It has been approved by peer review; however, it has undergone neither editing nor formatting by in-house editorial staff. The material is presented in the manner supplied by the author.

Supplementary Table 1. Two-year Follow-up clinical and cognitive variables, comparison between CHR-C and CHR-NC.

Variables	CHR- total	CHR-C	CHR-NC	Comparison	
				<i>t</i>	<i>P</i> value
Cases(n)	60	15	45	-	-
Clinical variables					
Follow-up GAF	64.2(9.4)	58.2(7.7)	66.2(9.1)	3.047	0.003
Positive symptoms	6.0(4.5)	9.7(4.5)	4.8(3.8)	4.176	<0.001
Negative symptoms	8.8(4.9)	11.3(7.3)	7.9(3.6)	1.766	0.096
Disorganization symptoms	4.3(2.6)	4.4(2.2)	4.3(2.8)	0.170	0.865
General symptoms	8.3(3.7)	9.8(3.4)	7.8(3.7)	1.854	0.069
SIPSTAL	27.4(10.2)	35.3(11.1)	24.7(8.5)	3.863	<0.001
Cognitive variables [Mean (SD)]					
Trail Making A	31.9(12.5)	41.5(10.7)	28.6(11.4)	3.855	<0.001
BACS symbol coding	56.1(12.0)	51.1(13.1)	57.8(11.2)	1.931	0.058
Category Fluency	19.1(5.8)	16.8(4.7)	19.8(5.9)	1.775	0.081
CPT-IP	2.6(0.8)	2.7(0.9)	2.6(0.8)	0.127	0.900
WMS-3 spatial span	16.4(2.9)	15.3(3.9)	16.8(2.4)	1.400	0.179
HVLT-R	23.1(5.8)	22.8(6.4)	23.1(5.7)	0.190	0.850
BVMT-R	26.3(6.3)	22.4(6.5)	27.6(5.7)	2.924	0.005
NAB mazes	18.0(6.5)	13.0(5.1)	19.8(6.1)	3.858	<0.001

Note. Abbreviations: BACS, Brief Assessment of Cognition in Schizophrenia symbol coding; BVMT-R, Brief Visuospatial Memory Test–Revised; CPT-IP, Continuous Performance Test–Identical Pairs; HVLT-R, Hopkins Verbal Learning Test–Revised; NAB, Neuropsychological Assessment Battery mazes; WMS-3, Wechsler Memory Scale–Third Edition spatial span. GAF, Global Assessment of Functioning; CHR, clinical high risk for psychosis. *t*: *t* for independent t-test.

Supplementary Figure 1. ROC curve and cut-off points of the LogEC50 and Span with relative sensitivity and specificity to discriminate CHR from HC.



Note. Area under Curve (AUC), Receiver Operating Characteristic (ROC), Standard error (SE), Confidence interval (CI), CHR, clinical high risk; HC, Healthy control.