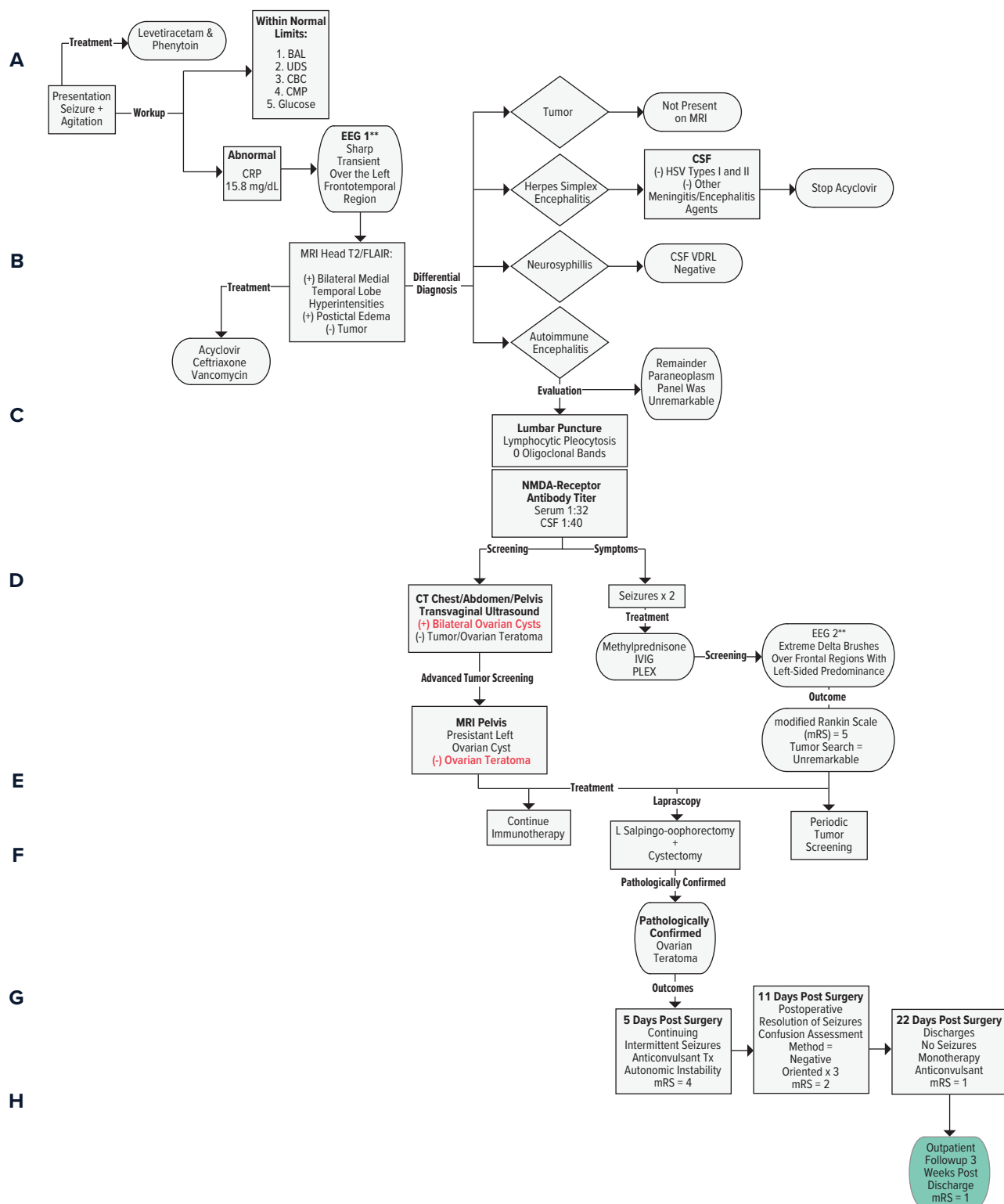


Figure 1.
Evaluation and Treatment of the Patient's Symptoms of Anti-N-Methyl-D-Aspartate Receptor Encephalitis



Abbreviations: BAL = blood alcohol level, CBC = complete blood count, CMP = complete metabolic profile, CRP = C-reactive protein, CSF = cerebrospinal fluid, CT = computed tomography, EEG = electroencephalogram, FLAIR = fluid-attenuated inversion recovery, HSV = herpes simplex virus, IVIG = intravenous immunoglobulin, MMSE = Mini-Mental State Examination, MRI = magnetic resonance imaging, mRS = Modified Rankin Scale, NMDA = N-methyl-d-aspartate, NMDAR-e = NMDA receptor encephalitis, OT = ovarian teratoma, PLEX = plasmapheresis, POD = postoperative day, Tx = treatment, UDS = urine drug screen, VDRL = venereal disease research laboratory. Symbols: (+) present, (-) not present.