



## **Supplementary Material**

**Article Title:** Placebo Effects in the Treatment of Noncognitive Symptoms of Alzheimer's Disease: Analysis of the CATIE-AD Data

**Author(s):** Chisa Ozawa, MD; Rachel Roberts, MS; Kazunari Yoshida, MD; Takefumi Suzuki, MD, PhD; Barry Lebowitz, PhD; Suzanne Reeves, PhD; Robert Howard MD; Takayuki Abe, PhD; Masaru Mimura MD, PhD; and Hiroyuki Uchida, MD, PhD

**DOI Number:** 10.4088/JCP.17m11461

### **List of Supplementary Material for the article**

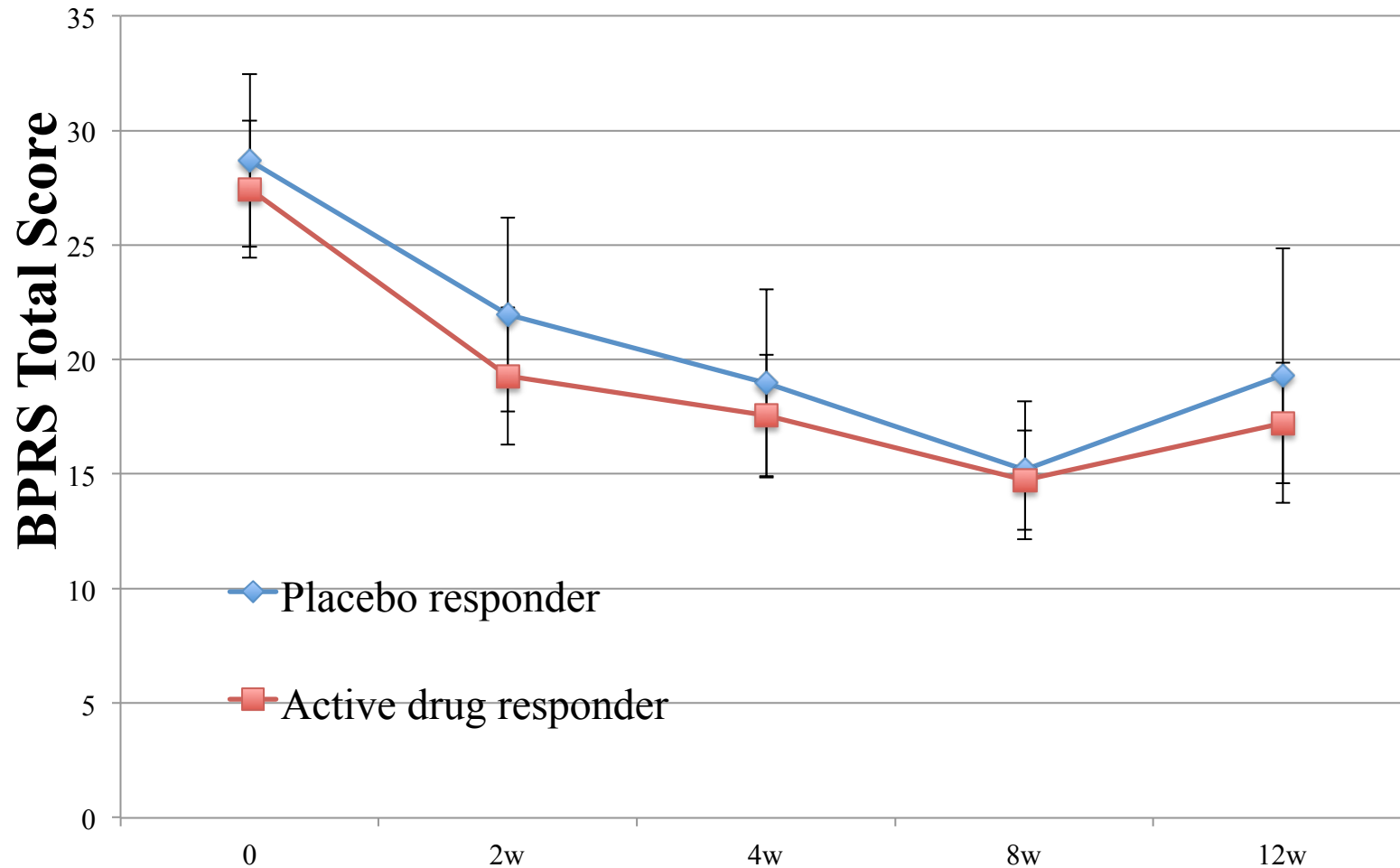
1. [eFigure 1](#) Trajectories of Mean Total Scores of BPRS (AC)
2. [eFigure 2](#) Trajectories of Mean Total Scores of NPI (AC)
3. [eTable 1](#) Association Between Demographic and Clinical Characteristics and Placebo Response in BPRS and NPI at Week 8 (AC)
4. [eTable 2](#) Prediction Performance of Score Reduction at Week 2 for Placebo Response at Week 8 (AC)

### **Disclaimer**

This Supplementary Material has been provided by the author(s) as an enhancement to the published article. It has been approved by peer review; however, it has undergone neither editing nor formatting by in-house editorial staff. The material is presented in the manner supplied by the author.

## Supplementary eFigure 1.

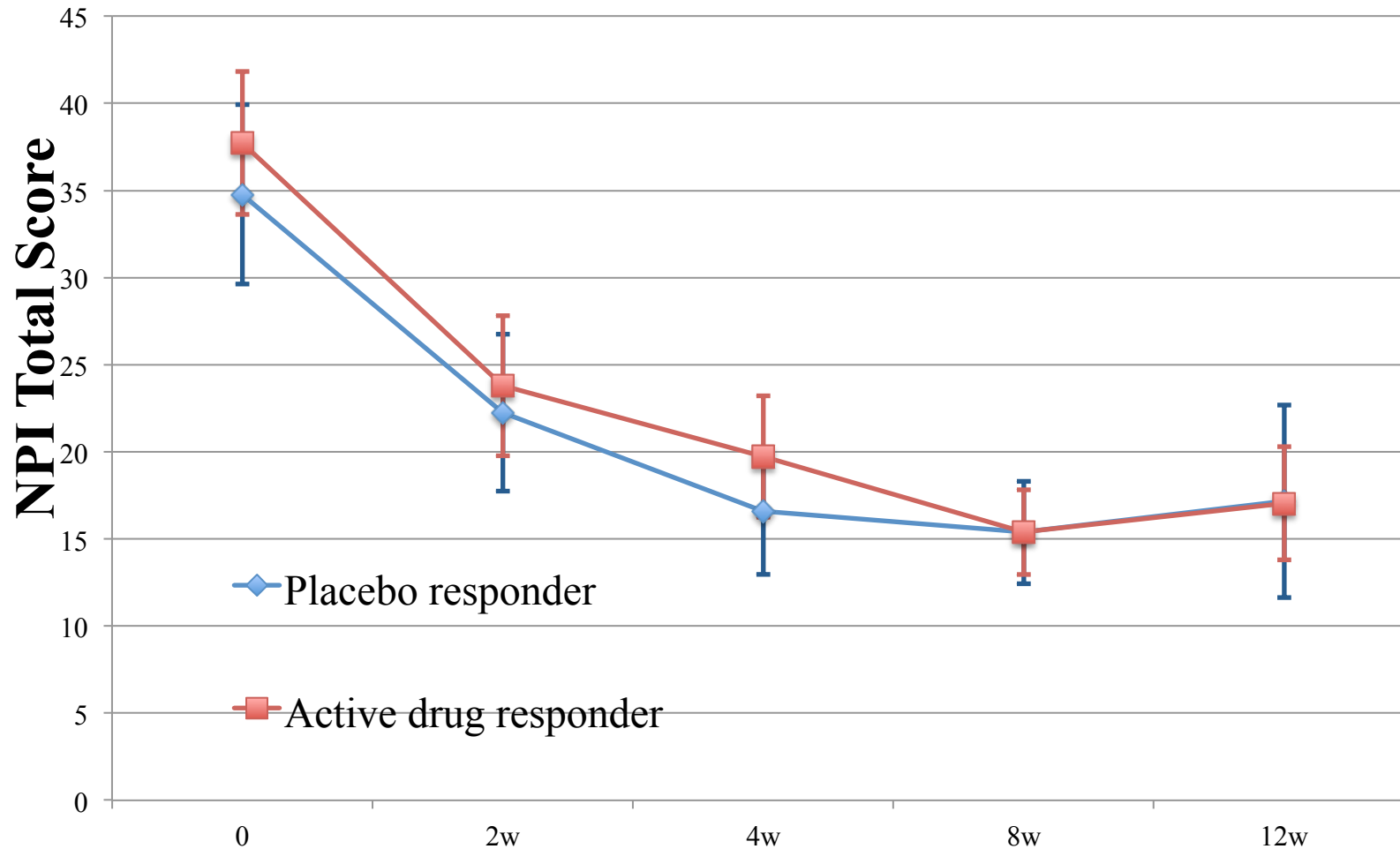
### Trajectories of Mean Total Scores of BPRS(AC)



Abbreviations: AC, available case; BPRS, Brief Psychiatric Rating Scale  
Vertical bars indicate standard deviations.

## Supplementary eFigure 2.

### Trajectories of Mean Total Scores of NPI (AC)



Abbreviations: AC, available case; NPI, Neuropsychiatric Inventory  
Vertical bars indicate standard deviations.

Supplementary eTable 1. Association Between Demographic and Clinical Characteristics and Placebo Response<sup>a</sup> in BPRS and NPI at Week 8 (AC)

Variables	Rating scale used						
	BPRS			NPI			p-value <sup>b</sup>
	Odds Ratio	95%CI	p-value <sup>b</sup>	Odds Ratio	95%CI	p-value <sup>b</sup>	
Age (years)	0.93	(0.84-1.04)	0.187	1.03	(0.95-1.13)	0.472	
Sex							
Male	1 (reference)			1 (reference)			
Female	0.38	(0.085-1.66)	0.196	0.37	(0.09-1.46)	0.158	
Race							
White	1 (reference)			1 (reference)			
Others	2.47	(0.57-10.8)	0.230	1.07	(0.29-4.04)	0.919	
Marital status							
Married	1 (reference)			1 (reference)			
Not married	0.30	(0.065-1.43)	0.132	0.67	(0.18-2.49)	0.547	
BPRS/NPI total score at baseline	1.03	(0.96-1.11)	0.426	1.02	(0.97-1.07)	0.546	
BPRS/NPI total score reduction at week 2	<b>1.15</b>	<b>(1.03-1.28)</b>	<b>0.012</b>	1.04	(0.98-1.10)	0.163	
MMSE total score at baseline	1.17	(0.96-1.44)	0.127	1.16	(0.95-1.41)	0.149	
CSDD total score at baseline	0.87	(0.75-1.01)	0.072	0.96	(0.83-1.11)	0.580	
ADAS-Cog total score at baseline	1.05	(0.96-1.14)	0.298	1.03	(0.96-1.11)	0.402	

<sup>a</sup> Response was defined as a 25% or more reduction in the BPRS/NPI total score from baseline to week 8.

<sup>b</sup> p-value of <0.05 was shown in bold.

Abbreviations: AC, available case; ADAS-Cog, Alzheimer Disease Assessment Scale's Cognitive subscale; BPRS, Brief Psychiatric Rating Scale; CI, confidence interval; CSDD, Cornell Scale for Depression in Dementia; MMSE, Mini-Mental State Examination; NPI, the Neuropsychiatric Inventory

Supplementary eTable 2. Prediction Performance of Score Reduction at Week 2 for Placebo Response<sup>a</sup> at Week 8 (AC)

Rating scales used	Percentage score reduction at week 2	Sensitivity	Specificity	PPV	NPV	Accuracy	AUC
BPRS (n=126)	5%	0.71	0.56	0.57	0.70	0.629	0.81
	10%	0.66	0.71	0.66	0.71	0.683	
	15%	0.59	0.74	0.65	0.68	0.667	
	20%	0.45	0.79	0.65	0.63	0.634	
	25%	0.45	0.88	0.76	0.65	0.682	
NPI (n=126)	5%	0.80	0.33	0.67	0.50	0.625	0.60
	10%	0.75	0.375	0.67	0.47	0.609	
	15%	0.72	0.42	0.67	0.48	0.603	
	20%	0.60	0.46	0.65	0.41	0.547	
	25%	0.58	0.54	0.68	0.43	0.563	

<sup>a</sup> Response was a 25% or more reduction in the BPRS and NPI total scores from baseline to week 8

Abbreviations: AC, available case; AUC, area under the curve; BPRS, Brief Psychiatric Rating Scale; NPI, Neuropsychiatric Inventory; NPV, negative predictive value; PPV, positive predictive value