

Supplementary Material

Article Title: Vortioxetine for Cognitive Impairment in Major Depressive Disorder during Post-COVID Syndrome: Real-World Evidence

Authors: Hernan F. Guillen-Burgos, MD; Juan F. Galvez-Florez, MD; Sergio Moreno-López, PhD; Juan-Manuel Anaya, MD, PhD; Angela T.H. Kwan, MSc; Roger S. McIntyre, MD, FRCPC

DOI Number: 10.4088/JCP.24m15387

LIST OF SUPPLEMENTARY MATERIAL FOR THE ARTICLE

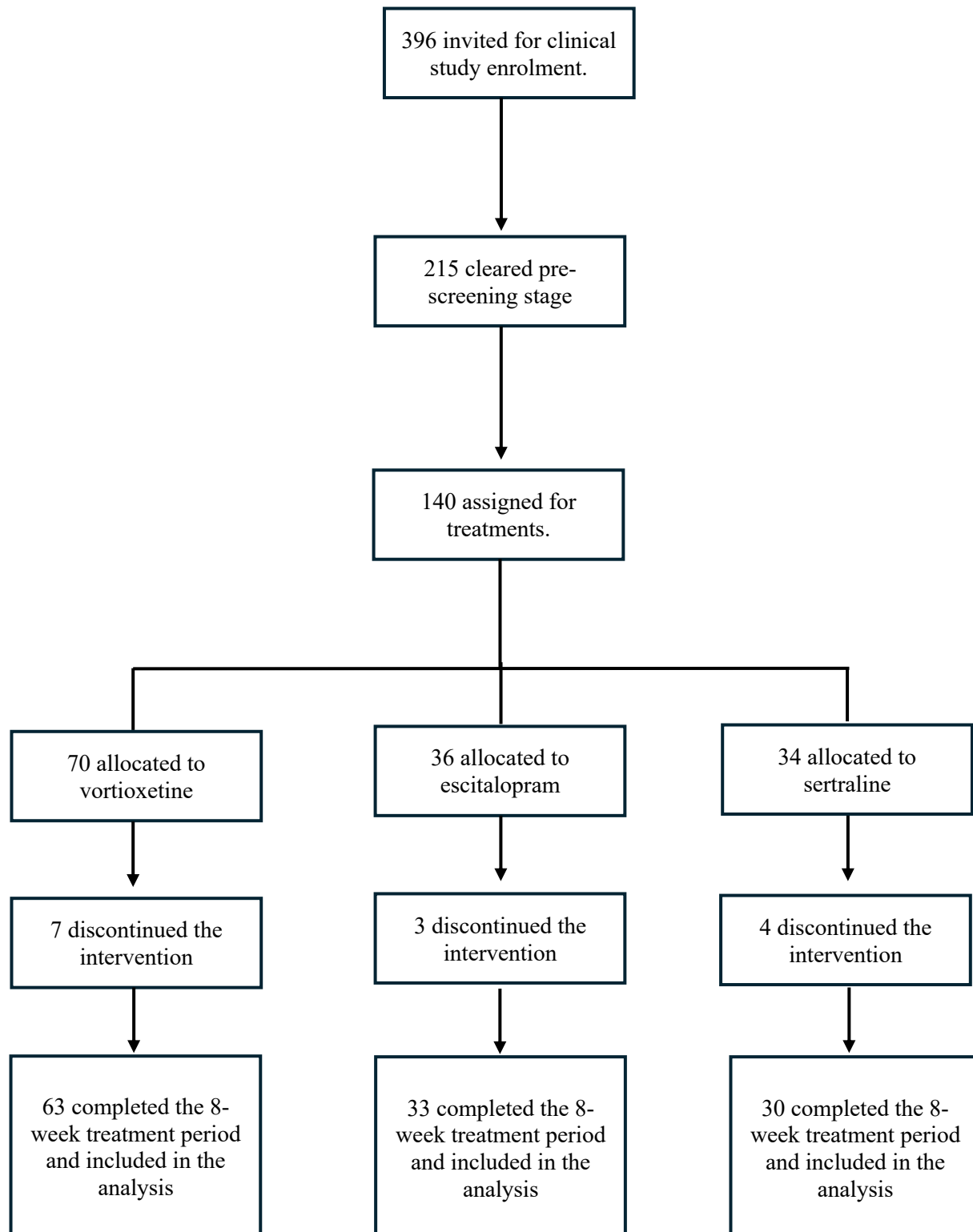
1. [Figure 1](#) STROBE Flow Diagram of the Participants Enrolment, Assigned and Follow-up in the Real-World-Evidence Study of Vortioxetine vs SSRIs for PCS with MDD
2. [Figure 2](#) LS Mean Score of PROMIS 7a in Individuals With PCS and MDD Treated With Vortioxetine vs Escitalopram vs Sertraline
3. [Figure 3](#) Response rate (MADRS reduced ≥ 50 symptoms) and remission (MADRS ≤ 10) in individuals with PCS and MDD treated with vortioxetine vs escitalopram vs sertraline

DISCLAIMER

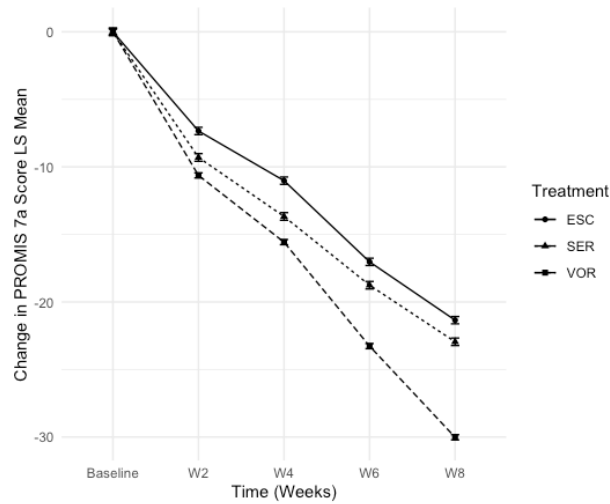
This Supplementary Material has been provided by the authors as an enhancement to the published article. It has been approved by peer review; however, it has undergone neither editing nor formatting by in-house editorial staff. The material is presented in the manner supplied by the author.

Supplementary Material.

Supplementary Material Figure 1. STROBE flow diagram of the participants enrolment, assigned and follow-up in the real-world-evidence study of vortioxetine vs SSRIs for PCS with MDD.

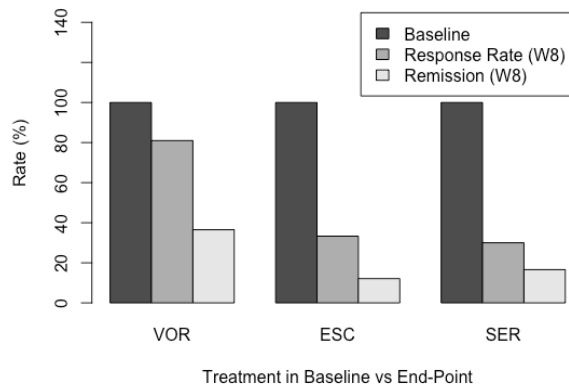


Supplementary Material Figure 2. LS mean score of PROMIS 7a in individuals with PCS and MDD treated with vortioxetine vs escitalopram vs sertraline.



VOR = Vortioxetine, ESC = Escitalopram, SER = Sertraline. Fatigue is a common symptom occurring in MDD and PCS. Our results showed that fatigue measured by PROMIS 7a decreased during the 8-week treatment with significant statistical differences at endpoint in vortioxetine arm than SSRIs groups.

Supplementary Material Figure 3. Response rate (MADRS reduced ≥ 50 symptoms) and remission (MADRS ≤ 10) in individuals with PCS and MDD treated with vortioxetine vs escitalopram vs sertraline.



VOR = Vortioxetine, ESC = Escitalopram, SER = Sertraline. In the baseline participants have a MADRS ≥ 26 . After 8-weeks of treatment, the rate of response in vortioxetine arm was 81%, remission rate 36.5%. For escitalopram, the response rate was 33.3% and remission rate 12.1%, and for sertraline the response rate was 30% and remission rate 16.6%.